

TYLER COUNTY COMMISSIONERS COURT
REGULAR MEETING
May 8, 2000 ---- 10:00 a.m.

THE STATE OF TEXAS ON THIS THE 8th day of May, 2000 the
Commissioners' Court in and for Tyler County, Texas convened in a Regular Meeting at
the Commissioners' Courtroom in Woodville, Texas, the following members of the Court
present, to wit:

JEROME OWENS
C.D. WOODROME
RUSTY HUGHES
JOE MARSHALL
HENRY EARL SAWYER
DONECE GREGORY

COUNTY JUDGE
COMMISSIONER, PCT. #1
COMMISSIONER, PCT. #2
COMMISSIONER, PCT. #3
COMMISSIONER, PCT. #4
COUNTY CLERK, EX OFFICIO

The following were absent: none thereby constituting a quorum. In addition to the
above were:

JOYCE MOORE
PATRICIA BROWN
GARY HENNIGAN
LYNNETTE CRUSE
WADE SKINNER
TERRY ALLEN

COUNTY AUDITOR
DISTRICT CLERK
SHERIFF
TAX ASSESSOR/COLLECTOR
CONSTABLE, PCT. #3
JUVENILE PROB. OFFICER

A motion was made by Commissioner Hughes and seconded by Commissioner Marshall
to approve the minutes of April 14, 17, 18, 2000. All voted yes and none no.

A motion was made by Commissioner Sawyer to approve the **County Probation
monthly reports, both adult and juvenile departments. Commissioner Hughes**
seconded the motion. All voted yes and none no. SEE ATTACHED REPORTS.

Commissioner Woodrome motioned to accept the monthly report of the **Justice of
Peace, Pct. #1. Commissioner Hughes** seconded the motion. All voted yes and none
no. SEE ATTACHED REPORT.

A motion was made by Commissioner Sawyer to accept the **monthly report of the
County Clerk. Commissioner Marshall** seconded the motion. All voted yes and none
no. SEE ATTACHED REPORT.

A motion was made by Commissioner Sawyer and seconded by Commissioner Hughes
to approve the **monthly report of the County Extension Department.** All voted yes
and none no. SEE ATTACHED REPORT.

A motion was made by **Commissioner Sawyer** to approve the **allowances and accounts payable** as submitted by the **County Auditor**. **Commissioner Marshall** seconded the motion. All voted yes and none no. SEE ATTACHED

COMMISSIONERS' COURT

May 8, 2000

Commissioner Sawyer motioned to accept the **resignation** of the **County Treasurer**, Tina Carillo, dated April 28, 2000. **Commissioner Marshall** seconded the motion. All voted yes and none no. Judge Owens called for statements before he called for nominations. **Commissioner Marshall** expressed his feelings of friendship between two applicants for the unexpired term, Sharon Fuller and Jackie Skinner. He hoped everyone viewed their decision as trying to do what is right for Tyler County. Judge Owens called for a motion to the appointment of a County Treasurer. Sharon Fuller stood and announced that she wanted to appoint Jackie Skinner, temporarily until November. **Commissioner Sawyer** motioned to appoint Jackie Skinner as **County Treasurer** until the next General Election in November 2000. **Commissioner Marshall** seconded the motion. Rusty Hughes stated that he was considering another appointment, but that it had come to his attention that they were withdrawing, so he would be voting for Jackie. All voted yes and none no. SEE ATTACHED OATH *Judge Owens alluded to the court's concern for the family of Nell Fuller, now very ill.

The Executive Session and action concerning same was not held.

Judge Owens introduced C.D. Woodrome as the newly appointed Commissioner to fill the unexpired term of Maxie Riley. C.D. Woodrome responded with allocades of the condition that Commissioner Riley had left his precinct; and, that Tyler County was recognized in Austin and Washington because of the work of Commissioner Riley.

A motion was made by **Commissioner Hughes** and seconded by **Commissioner Marshall** to approve the **Official Bond** of C.D. Woodrome for **Commissioner, Pct. #1**. All voted yes and none no. SEE ATTACHED BOND

A motion was made by **Commissioner Marshall** and seconded by **Commissioner Sawyer** to approve the **Official Bond** of Lynette Cruse for **Tax Assessor/Collector**. All voted yes and none no. SEE ATTACHED BOND

A motion was made by **Commissioner Hughes** and seconded by **Commissioner Sawyer** to approve the **Official Bond** of JoAnn McCool for **Fire District Treasurer, #3**. All voted yes and none no. SEE ATTACHED BOND

A motion was made by **Commissioner Hughes** and seconded by **Commissioner Marshall** to approve the **Official Bond** of Durwood Fails for **Fire District Treasurer, #4**. All voted yes and none no. SEE ATTACHED BOND

Commissioners' Court
May 8, 2000

Commissioner Woodrome motioned to adopt the **resolution** supporting Tyler County **Chamber of Commerce** in their application for the Texas Historical Commissioner for a grant for East Texas Forest Trail Designation. **Commissioner Sawyer** seconded the motion. All voted yes and none no. SEE ATTACHED RESOLUTION.

A motion was made by **Commissioner Marshall** and seconded by **Commissioner Sawyer** to appoint Judge Owens to the **DETCOG board**, replacing Commissioner Riley. All voted yes and none no.

A motion was made by **Commissioner Marshall** and seconded by **Commissioner Woodrome** to appoint Henry Earl Sawyer as **County Judge ProTem**. All voted yes and none no.

C.D. Woodrome presented a proposal to join Woodville ISD in cosponsoring a grant application to set up an East Texas Community Consortium Network. The county would benefit by tying into the fiber optic cable from Woodville ISD to the sheriff's department utilizing the RESNET infrastructure. Benefits would include having access to the Medical Center for Tyler County Hospital; instant access to the internet; having public access terminals installed at the Shivers Library and the county law library; and, an economic development tool. The cost for the County is estimated to be \$20,000 for the cabling and a cost of \$1800 per year for RESNET service. Judge Owens indicated the county might look into getting a grant to cover the cost of this network. **Commissioner Woodrome** motioned to support the grant application thru a letter of support, at no cost to the county at this time. **Commissioner Hughes** seconded this motion. All voted yes and none no. SEE ATTACHED.

The meeting was adjourned by a consensus of the court.

Commissioners' Court
May 8, 2000

THERE BEING NO FURTHER BUSINESS, THE MEETING ADJOURNED.

SIGNED: Jerome Owens Jerome Owens, County Judge

C.D. Woodrome C.D. Woodrome, Comm. Pct. #1

Rusty Hughes Rusty Hughes, Comm. Pct. #2

Joe Marshall Joe Marshall, Comm. Pct. #3

Henry Earl Sawyer Henry Earl Sawyer, Comm. Pct. #4


ATTEST: Donece Gregory Donece Gregory, County Clerk

In the name and by the authority of

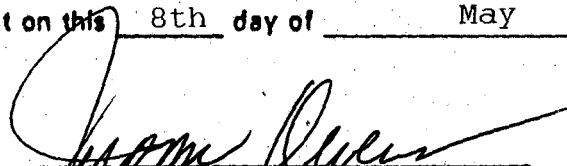
The State of Texas

OATH OF OFFICE

I, JACKIE SKINNER, do solemnly swear (or affirm), that I will faithfully execute the duties of the office of County Treasurer of the State of Texas, and will to the best of my ability preserve, protect, and defend the Constitution and laws of the United States and of this State, so help me God.


Affiant

SWORN TO and subscribed before me by affiant on this 8th day of May, 2000


Signature of Person Administering Oath

Jerome Owens
Printed Name

County Judge
Title

(Seal)

The State of Texas

Statement of Appointed Officer

(PLEASE TYPE OR PRINT LEGIBLY)

I, C.D. WOODROME, do solemnly swear (or affirm), that I have not directly or indirectly paid, offered, promised to pay, contributed, or promised to contribute any money or thing of value, or promised any public office or employment, as a reward to secure my appointment or confirmation thereof, so help me God.



Affiant's Signature

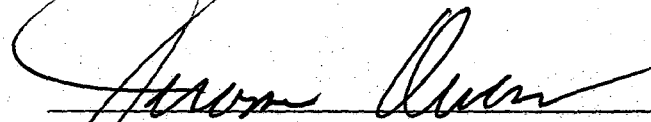
Commissioner, Pct.#1, Tyler County, Unexpired Term

Office to Which Appointed

Tyler County

City and/or County

SWORN TO and subscribed before me by affiant on this 1st day of May, 192000.



Signature of Person Administering Oath

Jerome Owens

Printed Name

County Judge

Title

See Reverse Side
for Instructions

Revised July 1994

In the name and by the authority of

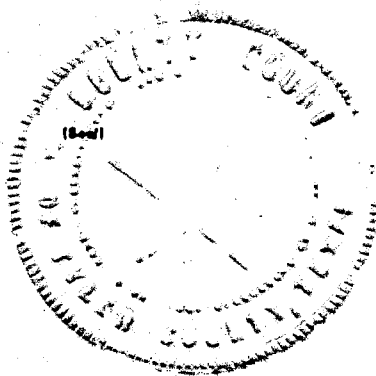
The State of Texas

OATH OF OFFICE

I, C.D. WOODROME, do solemnly swear (or affirm), that I will faithfully execute the duties of the office of Commissioner, Pct.#1, Tyler County, Unexpired Term of the State of Texas, and will to the best of my ability preserve, protect, and defend the Constitution and laws of the United States and of this State, so help me God.

C.D. Woodrome
Affiant

SWORN TO and subscribed before me by affiant on this 1st day of May,
~~19~~ 2000.



Jerome Owens
Signature of Person Administering Oath

Jerome Owens
Printed Name
County Judge
Title



Western Surety Company

A Subsidiary of CNA Surety Corporation

- **IMPORTANT NOTICE**

To obtain information or make a complaint:

- You may call Western Surety Company's toll-free telephone number for information or to make a complaint at

1-800-233-8800

- You may also write to Western Surety Company at

P. O. Box 655908
Dallas TX 75265-5908

or

P. O. Box 5077
Sioux Falls, SD 57117-5077

- You may contact the Texas Department of Insurance to obtain information on companies, coverages, rights or complaints at

1-800-252-3439

- You may write the Texas Department of Insurance

P.O. Box 149104
Austin, TX 78714-9104
FAX # (512) 475-1771

- **PREMIUM OR CLAIM DISPUTES:**

Should you have a dispute concerning your premium or about a claim, you should contact the agent first. If the dispute is not resolved, you may contact the Texas Department of Insurance.

- **ATTACH THIS NOTICE TO YOUR POLICY OR BOND:**

This notice is for information only and does not become a part or condition of the attached document.



Western Surety Company

- **IMPORTANT NOTICE**

To obtain information or make a complaint:

- You may call Western Surety Company's toll-free telephone number for information or to make a complaint at

1-800-233-8800

- You may also write to Western Surety Company at

P. O. Box 655908
Dallas TX 75265-5908

or

P. O. Box 5077
Sioux Falls, SD 57117-5077

- You may contact the Texas Department of Insurance to obtain information on companies, coverages, rights or complaints at

1-800-252-3439

- You may write the Texas Department of Insurance

P.O. Box 149104
Austin, TX 78714-9104
FAX # (512) 475-1771

- **PREMIUM OR CLAIM DISPUTES:**

Should you have a dispute concerning your premium or about a claim, you should contact the agent first. If the dispute is not resolved, you may contact the Texas Department of Insurance.

- **ATTACH THIS NOTICE TO YOUR POLICY OR BOND:**

This notice is for information only and does not become a part or condition of the attached document.



City of Livingston, Texas

200 West Church Street, Livingston, Texas 77351-3281
Telephone: (409) 327-4311 Fax: (409) 327-7784

May 2, 2000

Telecommunications Infrastructure Fund Board
1000 Red River, Room E208
Austin, TX 78701-2698

Re: Letter of Support for the East Texas Community Consortium

Gentlemen:

On behalf of the City of Livingston, I wish to offer my support to the East Texas Community Consortium's efforts to involve Polk and Tyler Counties' communities in developing a multi-purpose community-based network through the Grants for Collaborative Community Networks.

Through the TIF-eligible entities represented through this consortium – public schools, libraries, not-for-profit health care facilities, and institutions of higher education – funds for this project will be used to help our communities develop projects that take advantage of the infrastructure available, while linking community services, expanding user access, providing common training resources, organizing local Web content, improving community communications, promoting community economic development and including individuals traditionally unable to access advanced technologies.

I feel this project will have a very positive impact on the communities involved. I am pleased to support the Consortium's efforts on behalf of the City of Livingston.

Please feel free to contact me for further information at (936) 327-4311.

Yours truly

Ben R. Ogletree, Jr., Mayor
City of Livingston, Texas

Ben R. Ogletree, Jr., Mayor

Sam Gordon, City Manager

Marilyn Sutton, City Secretary

Council Members: Sandra Wood, Kenneth Parkhill, Gene Bush, Bill Watson, Scott Simpson

RESOLUTION

**A RESOLUTION SUPPORTING TYLER COUNTY CHAMBER OF COMMERCE
IN THEIR APPLICATION TO THE TEXAS HISTORICAL COMMISSION
FOR A GRANT FOR EAST TEXAS FOREST TRAIL DESIGNATION**

WHEREAS, the Texas Historical Commission has called for applications for the Texas Travel Trails Heritage Tourism Program; and

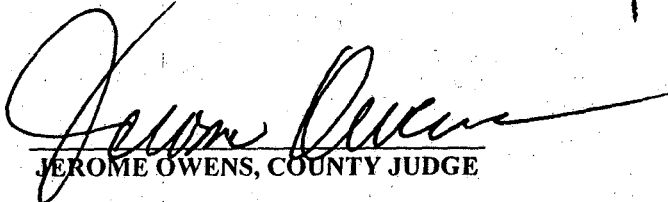
WHEREAS, the Texas Travel Trails is a community based endeavor designed to assist local governments and organizations in the preservation, enhancement and marketing of heritage attractions along designated trails; and

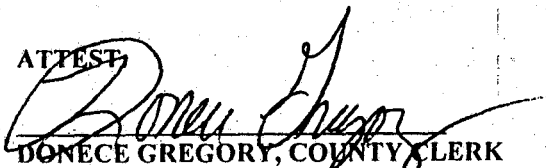
WHEREAS, the Texas Travel Trails will strengthen the heritage and cultural component of the tourism experience along the trails; and

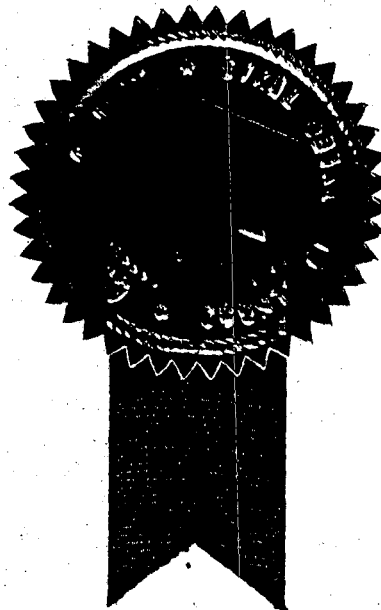
WHEREAS, the Tyler County Chamber of Commerce is working to develop the East Texas Region as a marketable tourism destination.

NOW THEREFORE BE IT RESOLVED that the Tyler County Commissioners' Court does, by the adoption of this resolution, give its unanimous support to the Tyler County Chamber of Commerce for their efforts in pursuing the application process with the Texas Historical Commission to make the East Texas Forest Trail a viable project in East Texas.

PASSED AND APPROVED THIS 8TH DAY OF May, 2000.


JEROME OWENS, COUNTY JUDGE

ATTEST

DONECE GREGORY, COUNTY CLERK





Tyler County

Commissioners
Maxie L. Riley, Pct. I
Rusty Hughes, Pct. II

JEROME P. OWENS JR.
County Judge

Commissioners
Joe Marshall, Pct. III
Henry Earl Sawyer, Pct. IV

May 5, 2000

EAST TEXAS COMMUNITY CONSORTIUM NETWORK

VISION STATEMENT

➤ *STATEMENT OF PURPOSE:*

Tyler County Government is striving to provide the best service for it's citizens possible, while keeping costs and the resulting tax burden as reasonable as possible.

With an economy based primarily on the forest industry, and due to a rural location, the opportunities for economic growth have been rare. Most of the growth has been in the public sector. Growth in the private arena is what is needed to establish a better tax base, and job market. The State of Texas considers Tyler County an Economically Disadvantaged County. Such a designation places Tyler County in the same category as counties located along the Mexico Border. Utilizing high-speed capabilities, as being sought in the grant application will provide Tyler County Government a level playing field to compete for additional industry and serve it's citizens in a more efficient manner.

VISION STATEMENT

➤ *EXPECTED OUTCOME OF PROJECT:*

Increasing citizen access to services only available from County Government. Offices impacted include County Clerk for researching records; precinct commissioners' office for road information, bidding process and weather related concerns. Adult Probation and Juvenile Probation departments for sex offender listings. Access for education. Requirements for probationers' training and educational updates for employees, real-time video arraignments and detention hearings with various judicial offices. Filing of offense reports, Sheriffs' office will see savings on personnel costs by distance learning for officers, screen

process and weather related concerns. Adult Probation and Juvenile Probation departments for sex offender listings. Access for education. Requirements for probationers' training and educational updates for employees, real-time video arraignments and detention hearings with various judicial offices. Filing of offense reports, Sheriffs' office will see savings on personnel costs by distance learning for officers, screen imaging for Law Enforcement. Other offices will be able to utilize the community network with rapid access to State Government for information on Legislative action, researching laws and Judicial opinions including the Attorney Generals office. Electronic filing of reports, and providing reports under the freedom of information act, savings of printed material both coming into and distributed from the County offices.

VISION STATEMENT

➤ *ANTICIPATED BENEFITS TO COMMUNITY:*

The project brings value to the community in timesaving of county employees resulting in an indirect benefit to tax payers by keeping taxes from increasing. The public will have a much more convenient method of gaining access to information and services provided by County Government, and electronic communication can be utilized as a leverage or stepping stone to generate additional economic development for the creation of jobs, additional tax base and more services for Tyler County Citizens.

Respectfully Yours,

Jerome Owens
County Judge

C.D. Woodrome
Commissioner Precinct I

A. Widley

To: Tyler County Judge Jerome Owens
Commissioners Henry Sawyer
Joe Marshall
Rusty Hughes

The Woodville School District has asked the county to participate as a co-sponsor of a \$500,000 Texas Infrastructure Fund Grant Application. Although the county will not receive any direct funds if the school grant request is approved, county government will indirectly benefit, and the citizens we serve will, in turn, be recipients of quicker, more efficient, county operations.

Woodville School Superintendent, Dell Brown, and Technology Director, Werner Burwood, are the responsible for the grant application. Gary Campbell of Diboll is the grant writer. The application is due in Austin on May 19th. Information from this county in support of the application needs to be in the grant writer's hands as soon as possible.

Polk County Judge John Thompson can be a strong information resource, since he is already involved in a similar undertaking for Polk County.

The purpose of the grant is to set up the East Texas Community Consortium Network. This network would leverage the existing fiber optic, high-speed communications cable to serve the largest number of people possible. The RESNET (Rural Educational Services Network) fiber optic cable currently runs from the Medical Center in Houston up Highway 59 to Livingston and then along Highway 190 to Woodville. The Big Sandy School District and the Alabama Coushatta Reservation are connected to the RESNET.

About 12 inches and a \$2000 switch are all that keep the Tyler County Hospital from tying in to the fiber-optic cable. Memorial Health Systems of East Texas may be persuaded to cover that expense. With connection to the high speeds allowed by fiber-optic cable, our local hospital can provide our doctors with real-time, live video access to specialists in Houston or worldwide.

The Allan Shivers Public Library will probably receive funding through the grant, since libraries fall within the Texas Infrastructure Fund guidelines.

County government will have an expense of approximately \$20,000 in order to connect to the fiber optic cable. The major expense will be to install connecting fiber optic cable from the Tyler County Justice Center to the RESNET cable, which ends at the Woodville I.S.D. Administration Office. The county had the foresight to install fiber optic cable between the Justice Center and Courthouse several years ago, so Courthouse offices will be connected as well. If the tax assessor-collector's office and the appraisal district wish to advantage themselves of high-speed access, additional connections can be made to RESNET along Highway 190.

Attached is information compiled from each county office, with benefits and services that would result from high-speed internet access. This information is what will need to go to the grant writer. Even though county government usage may be minimal at this time, we can expect to see that change as more emphasis is placed on internet connectivity. Taking advantage of this opportunity now will also keep our connection expense to a minimum, compared to two or three years in the future. The county will not be out any expense initially, but we must be prepared to move on the connection work if the school receives grant funds. There is a 24-month window for the grant to be used.

REGARDS,

C. D. Wood

DRAFT (as of 5/4/00)

The East Texas Community Consortium Networking Plan

1. Cover Page and Required TIF Forms

2. Executive Summary: (Summarize your Community Networking project)

In our portion of rural East Texas (Polk and Tyler Counties), we largely live and work in a technological and informational vacuum. Our rural businesses have been both traditional, like farms, retail stores, and manufacturing plants, and not wholly linked with the outside world. While some sites in our two counties are linked by fiber optic cable and are part of a fairly significant infrastructure called RESNET (Rural Educational Services Network), other needed sites and public served entities are not linked nor ready to participate in a "global community." An apt analogy likens our area to a rural road (dial-up capabilities and low speed -low band width fiber optic cabling) merging into a ten lane highway (high-speed high-band width fiber optic cabling).

Other communication problems exist. Our citizens, who are considered economically disadvantaged, are unable to fully participate in their local government or take advantage of community events. They can't fully participate because they are limited by the physical conditions of the community. Small towns are often assumed to be models of community, but the reverse is often true. While rural areas may experience more civic participation, the primary sources of information are urban-focused television and radio stations, print media, and, increasingly, Internet services. Although we are fortunate that each of our rural communities do feature local newspapers and radio stations, our citizens can't fully participate in the community due to a lack of topical information (retrieval and access), and connectivity with the larger

outside world. While many studies have demonstrated that directing informational technology (basic forms of media as mentioned above) to community members is crucial for rural development, it is becoming increasingly more apparent that this information must be gathered and accessed on-line.

Possessing access to computer technology as a vehicle to the Internet can be problematic also. The majority of our citizens, because of their financial status or in some cases various disabilities, do not own computers. Thus, they have limited access (or no access at all) to emerging on-line technologies. This presents a real problem in terms of rural development. The economic growth, education, public health and safety, of each citizen in the community have always triggered the development of rural communities, like ours. Technology and communication applications and services universally affect each of these four vital components.

Keeping up with changes in information technology and communications, can be a difficult task. However, it is clear that more active local involvement by our citizens will make our rural area more economically stable, better educated, more safe and secure, and support a more livable and "connected" community. A community without geographical or political boundaries, a community that is "connected," can expect to enjoy distinct competitive advantages over those communities that are not. The most difficult challenges before us have shifted away from access to and acquisition of technology, and moved toward the meaningful integration of network resources into our daily activities.

Our ETCC Network Project will demonstrate the integration of high capacity Internet-based services throughout rural, under-served counties (Tyler and Polk Counties) in East Texas. Our project will include giving community members access to government information, social services, public education, and local businesses. This "enriched local content" will be provided to a variety of places including homes, schools, public libraries, hospitals, senior citizen centers, and places of work.

One of the main goals of our East Texas Community Consortium Networking Initiative is to provide our portion of rural East Texas (chiefly, Polk and Tyler Counties), with connectivity to major data centers including the world famous Houston Medical Center, the renown Texas A&M University, government offices in Austin, and various university and public libraries. By connecting to these centers, and others (any major facility or function that can be reached

through online connectivity), we expect our network to both serve as the vehicle and catalyst to a stronger, more knowledgeable, and "connected" community.

Through our East Texas Community Consortium Network, we will also be implementing a virtual and online electronic "village." To our users, our "village" will be our community network. It is our desire to move our community from merely a physical community to a virtual community. This type of network will also lead to the production and management of community specific information. When fully connected and implemented, our network will be able to offer our residents a wide range of services. Our community will be able to interact with a wide variety of online content and health information. The information will be posted and managed in such a way as to give residents a feeling of belonging. Groups and Clubs will be encouraged to provide up-to-date information on the designed community Web Pages. This will include information about the community, how to post links on the community pages, how to directly connect with each of the partners in our project (Woodville ISD, Big Sandy ISD, Livingston ISD, Polk and Tyler County Governments, Allen Shivers Library, Texas A&M University, Livingston Telephone, Alabama Coushatta Indian Reservation, City of Woodville, Sam Houston and Electric Company), how to volunteer in the community, how to access job opportunities, how to access business opportunities, how to link with various Web Pages around the community, and how to access various community services (including paying taxes, submitting licenses, and paying fees).

Our East Texas Community Consortium Network will also allow for collaboration between TIF eligible and non-TIF eligible partners. Our ETCC Network will cause businesses to want to advertise (helping to offer resources and future sustainability of the network) and enhance local economic development efforts. It is expected that once local businesses understand the function of the ETCC Network then they will be able to serve existing customers and recruit new ones more easily. We believe that to create a healthy and sustainable online community, our businesses must be included in our project. Businesses that can provide services for our community residents will add depth to their (community members) daily lives. We also believe that our ETCC Network will meet our community resident's needs in much the same way.

We also propose to connect a wide variety of consortium entities to an already in place high-speed, high-band width fiber optic cable. To this end, we (RESNET) have previously installed 6 strands of single mode fiber beginning in Livingston and traveling to Woodville. In Livingston,

the public schools, the library, the county Hospital, most of the County offices, and some of the city offices already have multi-mode fiber in place and are already connected to the backbone. Likewise, the Alabama-Coushatta Tribal Medical Clinic, Community Center, and tribal offices have fiber and are also connected to the backbone. In Woodville and Big Sandy, only the schools are currently connected. As part of a contractual arrangement with RESNET, The Sam Houston Electric Company (SHECO) maintains our fiber.

Because RESNET is currently infrastructure only, there are no real applications driving the use of the backbone. This is the next logical step in fully developing our network and “connecting” our community. This is also the chief reason why this TIF Community Grant is so critical to the future development of each of our communities (Tyler and Polk Counties). The TIF Community Grant not only provides the ideal vehicle to utilize the RESNET backbone in building a community centered, user oriented, services providing, and Web based network, but it also allows every citizen access to the same information (equity), in a variety of locations, and frees them to fully participate with their neighbors. By fully participating, we mean accessing information regarding cultural events, businesses, educational opportunities, health news and alerts, library offerings, current news, sports schedules, and governmental services. This list is not exhaustive but does give an indication of the wide range of information that can be accessed in a “connected community.” If information is considered power, then we fully expect our citizens to be powerful.

There are additional applications planned for our Community network. Using high resolution, high speed, high storage cable will allow cutting edge medical applications. For instance, two of our partners – Polk County Hospital (part of the larger Memorial Health Care System) and the Tyler County Hospital are extremely interested in using our network in advanced Tele-medicine applications. Most of their needs would entail using fiber optic cabling (MPEG), capable of sending and receiving full motion video. Each of our community hospitals desires to possess the ability to send x-rays and other time-sensitive pieces of patient data to larger medical institutions (like the Houston Medical Center) to be read. Currently, rural medical centers must send these types of medical documents by remote courier service. This causes precious wait time for the doctor and patient. For some illnesses like cancer and heart disease, this wait time could prove to put the patient’s life in danger due to an extended time to read and consult on the x-rays. Currently, the T-1 fiber optic cabling used with our RESNET is only

capable of operating at a data transmission speed of 1.4 MB per second. The cabling that we have in mind for our Networking Initiative (a Gig-A-Pop) would be capable of a much higher data transmission speed of 45 MB per second.

There are additional medical applications planned. For instance, the Alabama- Coushatta Indian Nation is deeply concerned about a high rate of diabetes that is prevalent in their tribe. They are already involved with various governmental agencies in conducting screenings and intervening in the lives of the tribal members. However, the Alabama Coushatta lack the ability to post medical information, which can be accessed by a majority of their people, either through home computer access or various public access points. Our planned community web-site will allow this posting of information as well as provide online links to diabetes and other medical Web-sites.

The planned East Texas Community Consortium Network will also provide a plethora of high quality community services. These local services will include providing: an online community Web-Site, population-centered public access sites (including libraries, public schools, hospitals, and senior citizen centers), technical support for our users, Internet training classes, an "Are You OK?" program aimed at Senior Citizens, e-commerce consultation services, "Kiosks" or portable Internet stations. These "Kiosks" will serve as Community Access Centers. These Community Access Centers are often the only way small businesses and families can get access to the Internet. Public access points (Community Access Centers) to the Internet, distributed throughout the community, will allow for full community participation in our network.

There will also be significant educational and informational services provided in support of the ETCC Network. Many of these services will be provided as "in-kind services." For example, the educational applications will include teaching Woodville, Big Sandy, and Livingston ISD students how to build Web Pages, receiving online and in-person technical expertise from Texas A&M University Computer Science students, offering information accessing skills to students and the general public, promoting continuing staff development opportunities for faculty and staff (use of technology and TEKS), and allow the community access to distance learning at various sites.

The informational services will be broad-based and expended through various community access points. However, the Allen Shivers Library in Woodville, and the Livingston Public

Library will play important roles in providing free access to the community. In fact, we expect that our ETCC Network will enable our libraries to reach out to new users and deliver expanding telecommunication services. Our libraries will play host to various technology trainings, host online authors via Web-based learning, provide workstation accessibility during extended hours, and move toward a virtual (online) presence in the community as opposed to merely a physical presence (building and books). The libraries will also offer electronic services, including online circulation services, online catalog access, Internet access, and a continuing posted calendar of events. The libraries will also help to identify community volunteers who may help with the ETCC Network.

3. Vision Statement: (Include statement of purpose and expected outcomes of the project. Include why the project brings value to the community)

The East Texas Community Consortium (ETCC) is a non-profit organization whose mission is to establish and effectively operate a community-access computer network. The purpose of this network is to connect people by applying information and information technologies to improve their lives. A major emphasis will be placed on making on-line computer access available to all community members, especially to those without ready access to these emerging technologies. A wide range of information, including news about community events, healthcare, library resources, government services, recreation, sports, and travel will be made available through our network. It is believed that by providing access to necessary electronic information - the quality of life, health, and economic development in the community will be improved. The ETCC will accomplish this mission by connecting a series of consortium members who have smaller individual networks. The interconnection of the networks will provide a cohesive, integrated, and cost effective network for the community. The purpose of the ETCC and its emerging network is to bring the outside world into our part of rural East Texas through high-speed Internet access.

It is expected that our network will accomplish the following objectives.

o **Connect local ETCC Partners to the high-speed RESNET fiber backbone**

The ETCC Partners have mostly built their own local networks. Some of

them are part of the RESNET some are not. Each has come to the conclusion that without a cohesive community network, then their own organizations will remain in isolation and have trouble reaching a significant number of community members with targeted information.

- **Assist local partners with creating new and innovative applications for the ETCC Networking Project**

Each partner, through a series of meetings (RESNET and ETCC Networking Project Planning Meetings) have been assisted in creating new and innovative approaches to use information through our proposed ETCC Network. One new partner, Marjorie Schultz, the Executive Director of the Interfaith Outreach bemoans the state of poverty in the community. "We have high unemployment figures, we have no public transportation at all and the nearest indigent or low income health care is 60 miles away in Lufkin, 30 miles away in Livingston, or 100 miles away in Galveston at UTMB." "Not a pretty picture," says Schultz. "Our biggest problem facing many county residents is the lack of information." She believes that the ETCC, through a variety of locations (including the Allen Shiver's Library and other public venues) could provide the links to offer critical information, like health care information, to community residents. The Alabama Coushatta Indian Health Care Center hopes to use our network to share information concerning diabetes and other health concerns. Their The prevalence of diabetes in the Indian population is well documented and on the rise.

- **Provide a full service network and serve as an informational clearinghouse to the community in the mold of the Blacksburg Electronic Village (BEV) sponsored by Virginia Tech University and located in Blacksburg Va.**

As one of our pledges to our communities, we have begun researching the possibility of creating an "Electronic Village." This electronic village would, among many services, provide our Tyler and Polk County residents with e-mail, technical support, Web home pages, dial up modem access to the Internet, classes and training on the use of the Internet, news and information about community events, news and data on health care topics, and information on public assistance. Additionally, our electronic village would provide links and portals to sites of critical importance to our communities like local hospitals, health care professionals, support groups, and employment opportunities. Like any well designed Web Page, our electronic village could target employment opportunities on the local, state, and national fronts. We think that our electronic village is at the heart of our ETCC Networking Project. In essence, this is the ETCC Networking Project.

- **Provide training opportunities for our residents - designed to foster the acquisition of computer use and Internet communication skills**

It is believed that by offering classes in basic Internet use, and later more advanced classes in software usage, Internet search skills, and exploring the Internet for work and pleasure, we can "stretch" the capacity of our community and meet a wide variety of its needs. These classes can be taught either in person (high school computer labs, libraries – networked PC stations) or on-line via the ETCC Network. Additionally, it is planned that the Woodville and Livingston High Schools will offer training in building Web Pages for

personal and business use. If scheduled properly, during after school hours, community residents would have an excellent opportunity to use already established high school computer labs to further their learning.

As stated earlier, the ETCC Networking Project would prove to be of immense value to the residents of Polk and Tyler Counties. The community network would provide educational opportunities to a rural area with limited or no access to the Internet, provide educational enrichment for at-risk and economically disadvantaged community members where these opportunities are non-existent and also to the "norm" population where opportunities are limited, provide much needed information regarding diabetes to the Alabama Couthatta Health Care Center (early detection and education) in a region where diabetes occurrence is extremely high. The ETCC Network will also provide centrally located "access points" so that the community can effectively maximize information concerning health care, employment and recreation opportunities, conduct genealogical research (there is currently a very good genealogical project going on in both Polk and Tyler Counties), and take Internet training classes. The ETCC Network would also provide specialized "links" to Web Pages and sites throughout the local area, Texas, the United States, and the World. Thus, Tyler and Polk County residents will, for the first time, be able to be truly "connected" to virtually every public Net Site known.

The World Wide Web Pages will enable multimedia information to be posted about our communities. The Web will serve as the "umbrella" linking our residents to other user services located on the Internet. These services range from directories to listservs. Our Web Page will have separate "go-to points" for Tyler and Polk Counties. We will emphasize our unique community content and our citizen's contributions to our area.

4. Community Network Organization: Project Membership

Identify partners, both TIF-eligible and non-TIF-eligible; describe the commitments each will make. Explain why this particular collaborative was formed. Describe any innovative projects the group has accomplished in the past. Describe each partner's role, responsibilities, and the benefits they expect to derive from the project. Explain how the collaborative represents the community to be served by the project. This initiative is designed to foster collaboration in order to improve communication and services. Applicants should describe the resources each project partner brings to the project so that these resources can be maximized through collaboration. Applicants must also identify the motivations and incentives for partners to collaborate, and describe how the project balances benefits and responsibilities for each partner.

Our East Texas Community Consortium involves both Texas Infrastructure Board TIF eligible (public schools, libraries, not-for-profit health care facilities, and institutions of higher education) and Non-TIF eligible partners (county governments, city governments, county extension agencies, etc.). Our East Texas Community Consortium (ETCC) was formed to involve a broad range of community residents and organizations in a multi-purpose and community-based network. This particular collaborative was formed to meet specific needs of our area in communicating with our neighbors and the outside world.

The ETCC was also established for the purpose of: enhancing public education through distance learning, undertaking data research over the Internet, establishing a health education program online (to help with early detection of illnesses such as diabetes, educating the community relating to these illnesses and providing better medical care through high speed Internet access), and providing a place for every citizen to receive Internet access.

Our TIF eligible partners include the Woodville ISD, the Livingston ISD, the Big Sandy ISD, the Alabama-Coushatta Indian Health Center, the Livingston Memorial Health Center, the Tyler County Hospital, the Allan Shivers Library located in Woodville and Texas A&M University. Our Non-TIF Members include the Polk County Courthouse, the Tyler County Courthouse, the Tyler County Extension Agency, and the City of Woodville offices. Each of these entities represents a diverse group from our two distinct communities (the Woodville area and the Livingston area). In our consortium are representatives from the public schools (Livingston ISD, Woodville ISD, and Big Sandy ISD), representatives from the library system (Allen Shivers Library in Woodville), representatives from non-profit health care centers (Alabama-Coushatta Indian Health Care Center, Tyler County Hospital, and Livingston Memorial Health Center) and a representative from higher education (Texas A&M University). At least three additional area school districts have also made inquiries regarding our consortium and /or project.

Each member has made a commitment of time, money, resources and personnel to help ensure the success of this project.

Specifically detail the contributions of each TIF and Non TIF eligible Partner (we need to have a list for each partner).

The East Texas Community Consortium was formed in 1999 in response to a need to take isolated local area networks and connect them to form a stronger and unique community network. Our two communities, Woodville and Livingston (representing Tyler and Polk County

respectively) are largely "wired." Livingston is slightly ahead of Woodville in this regard. However, neither community has yet been able to offer creative services or applications to its citizens. It is these services, we believe, that will make a significant difference in deploying a quality community network versus one in which members can just "e-mail" each other and that is all.

The East Texas Community Consortium (ETCC) is an offspring of an earlier collaboration of many of the same community partners (still in effect) called RESNET. RESNET, which stands for RURAL Educational System Network, was the brainchild of Harvey Janelli who once worked for IBM. The RESNET (comprised of original members the Woodville ISD, the Livingston ISD, the Big Sandy ISD, the Tyler County Hospital, the Alabama-Coushatta Indian Health Service Center, the Polk County Government, and the Sam Houston State University) actually had its beginnings in 1994 when the Woodville ISD began applying for several grants (the Houston Endowment Grant for fiber optic cabling and a USDA Grant for the electronics and hardware to connect to the fiber optic cabling). Additionally, the Woodville ISD agreed to enter into an agreement with Sam Houston State University to provide the fiber service to one location at each participating site.

The original purpose of RESNET was to provide high speed video (via fiber) to set up distance learning labs, participate in virtual field trips, and access high quality medical resources. The result of the RESNET collaboration was that the Livingston High School, the Big Sandy ISD (K-12, the Woodville High School and Main Campus was connected for distance learning and the Alabama-Coushatta Indian Health Service Center and Tyler County Hospital was connected for "telehealth" applications. This initial RESNET connectivity project was completed on October 24, 1997. At that time, the RESNET was the largest privately owned network in the state of Texas.

Beginning in the 1999-2000 school year, the Woodville ISD, along with the Aldine ISD (located in Houston, Texas), took part in a "Discovery Grant." The WISD received approximately \$20,000 to purchase specialized equipment that allowed us to "code" and "de-code" for Tele-conferencing purposes. Larry Flournoy, representing Texas A&M, was installed as the project manager for this grant. Noticing that there were a great deal of technology needs in our part of East Texas and that there was a significant infrastructure (RESNET) already in place, Mr. Flournoy recommended that we apply for TIF Planning Grant funds.

Subsequent to Larry Flournoy and Texas A&M's involvement with our project, Harvey Janelli left this area. With Mr. Janelli, went the direction and expertise needed to manage the RESNET. Texas A&M then graciously agreed to serve as the manager for the original fiber from Woodville to Houston.

Our East Texas Community Consortium is not unfamiliar with implementing innovative technology and / or networking projects. As mentioned earlier, the Woodville ISD has previously partnered with the Aldine ISD and Texas A&M University in a Discovery Grant. The awarding of this grant is new and the work and ordering of equipment (as specified in the application) is ongoing. The RESNET and RESNET infrastructure was formed on the basis of two grants - (the Houston Endowment Grant for fiber optic cabling and a USDA Grant for electronics and hardware to connect to the fiber optic cabling). Additionally, the Woodville ISD partnered with Sam Houston State University to provide the fiber service to a location at each participating RESNET TIF eligible partner site. As early as 1997, the RESNET Board of Directors entered into agreement with IBM as a fully vested business partner. IBM agreed to match in-kind donations of the then current grant to 50%. From the start, RESNET has been involved with bringing fiber optic cable to this part of EAST Texas. RESNET was instrumental in working with IBM, Lucent Technologies on the design and engineering, and installation of the fiber. RESNET was also instrumental in gaining access and right of ways in Woodville and throughout Tyler and Polk Counties. RESNET also lobbied for and was successful in bringing the Sam Houston Electric Cooperative into the 1997 project (RESNET infrastructure). As a result of RESNET's persistence, SHECO agreed to participate in this project and any further RESNET projects (see Appendix of Progress Report – Tribal Technology Project).

Each partner in our ETCC Networking Project has specific roles and responsibilities. For example, during the planning portion of this TIF Community Networking Grant

Woodville ISD – Technical – WISD with the assistance of Larry Flournoy from Texas A & M will provide technical specs for hardware needed to complete this project.

Livingston ISD – Application –

- Big Sandy ISD – Access –
- Allan Shiver’s Library – Sustainability –

Member’s Benefits Expected from This Project

- Woodville ISD – Technical – WISD expects to benefit indirectly through this grant. Our school will gain other avenues of access to the Internet especially the students of low-income families and at-risk students. The benefit of better health care to our students should translate into increased learning opportunities and higher attendance rates.
- Livingston ISD – Application –
- Big Sandy ISD – Access –
- Allan Shiver’s Library – Sustainability –

The community is well represented by the collaborative by virtue of its composition. Schools, hospitals, county governments, public libraries and Indian reservation comprise a large cross-section of the community, especially with the inclusion of community individuals selected to serve on committees and head projects.

Resources Available from Each Member to Assist in This Project:

- Woodville ISD – Technical – WISD will make available its network and personnel to maintain that network to the consortium.
- Livingston ISD – Application –
- Big Sandy ISD – Access –
- Allan Shiver’s Library – Sustainability –

Partner Collaboration (motivation and incentives for partners to collaborate):

All entities involved share a common cross section with similar socio economic populations as well as related health problems. This common thread means all parties involved can benefit from type services offered by ETCC.

Balance Benefits and Responsibilities:

Including a wide cross section of community individuals to serve on committees and head projects will ensure that those responsible will serve as a ‘check and balance’ to make sure benefits are received in the best manner possible.

B. Governance Process

C. Managerial Process

The head of each member shall appoint a person to carry out the day-to-day operations and execute the decisions made by the ETCC governing body.

Grant Officials

- Project Director – Ben Talley – has assisted with the implementation of two TIF grants in PS 6. He is a computer science teacher and assistant network manager for WISD.
- Authorized Official – Dell Brown – is superintendent of WISD and has implemented several TIF and other grants.
- Financial Officer – Tommy Weaver – is business manager for WISD and has managed all financial aspects of every WISD grant including TIF.

Fiscal Agent – WISD – is well adapted to handling large amounts of money involving government agencies and has served as fiscal agent on other TIF grants.

Network Manager – Larry Flournoy – works for Texas A & M University in the Academy for Advanced Telecommunications and Learning Technologies.

B. Governance Process

In this section, applicants should describe the functions of the group who will be responsible for the overall direction of the Community Network. The governing board should include members from the Community Network partner organizations, representatives from the community to be served, and recognized community leaders such as elected officials and/or community

organizers. Applicants are encouraged to keep the size of their governing bodies to a reasonable number (8-20).

Describe how the partner leadership will govern the project. Identify governance policies including how decisions will be made and project deliverables approved and monitored. The governance structure should include the duties and responsibilities of the partner institutions, and a high-level organizational chart must be provided. A Collaborative Agreement must be included. (See Section 5 for guidelines; Section 12 for a sample agreement).

Indicate how communication between the project partners will be managed. Describe how the governance structure will handle turnover, partner attrition, the disposition of equipment, and possible conflict. Describe how the governance partners will communicate with the "hands-on" Community Networking staff.

Please review the TIF Collaboration Guidelines in Section 5 of this document for more information about the legal and fiscal responsibilities of each project member.

For both the managerial and governance structures, applicants should describe how the necessary functions of managing all aspects of the project will be conducted. Many Community Networks have used a committee structure for specific aspects of their projects. Examples of such committees include Information Planning, Information System Management, Project Monitoring and Evaluation, Publicity and Communications, etc.

The RESNET Board will be the governing body for the East Texas Community Consortium (ETCC) and the accompanying ETCC Networking Project. Each RESNET Entity has an equal representation on the Board. The RESNET Board, owing to the previous collaboration between members, is currently in place and operating under a distinct and published set of governing principals and bylaws. Each RESNET entity is a member based on an Interlocal agreement between agencies (see Appendix, governing bylaws and responsibilities of the RESNET Board). The RESNET Board currently holds monthly meetings according to the Texas Open Meetings Act. The meetings are open to the public, agendas are announced and published in multiple and well lit areas. Minutes and actions taken by the RESNET Board are communicated to back to members and area media outlets (newspapers, radio stations). Additionally, the minutes of the meetings are posted on the ETCC "Intranet (at <http://www.etcc.intranets.com>)." This "Intranet" has proven to be very beneficial in delivering instant messaging to ETCC and RESNET members. During the planning for this TIF networking Grant, members e-mailed and posted messages to each other, surveys (the Community Survey as found in the Community Networking RFP, see Appendix – Community Survey) were completed and accessed, and links to sites connected with

our work (Texas GigaPOP, Blacksburg Electronic Village, and TIF Board) were posted. This site, alone, gives members a sense of belonging and connection that no other kind of communication (except for face-to-face) strategy can provide. And this type of communication can be done from the comfort of your home or office.

In progress – sent DWB an E-mail.

Use Sample Collaborative Agreement in grant guidelines

Communication between project partners will take place via email

The RESNET Board will resolve all conflicts between members. Each member will handle turnover and attrition within their domain and the RESNET Board will address these matters within the board itself.

It will be the responsibility the RESNET Board to select and implement the following committees by choosing one person from each entity to serve on each committee:

- Information Planning and Management
- Project Monitoring and Evaluation
- Publicity and Communication

C. Managerial Process

In this section, applicants should describe the functions of the individuals who will execute the decisions made by the governing body and who participate in the hands-on, day-to-day operations of the project.

Identify the Grant Officials – the Project Director, Financial Officer, and Authorized Official – and explain their qualifications and experience in implementing TIF projects, other grants, or other technology projects. (See Section 5 for more information about TIF guidelines for project officials.)

Every project must select a Fiscal Agent from a TIF-eligible entity to receive and manage the grant funds. Identify the entity selected as the Fiscal Agent. Describe how this entity is qualified to manage the grant funds.

Describe other management officials such as the content editor or network manager who will implement and sustain the project. Explicit duties and responsibilities must be included. Include expected number of hours management officials will contribute to the project. An organizational chart and a succession management plan (turnover response plan) must be provided. Priority will be given to projects providing the hands-on staff with an appropriate amount of time and resources to manage the various aspects of the project.

There are four persons who will play key roles in executing the decisions made by the RESNET Governing Body. Each of these persons will also participate in the hands-on, day-to-day operations of the project. Each of these positions works for the Woodville ISD who has agreed to act as fiscal agent for the ETCC. Other decisions that are acted upon by the RESNET Board will be handed down to one appointed member from each entity. The persons who will be managing both the anticipated TIF Networking Grant and helping to facilitate the major decisions and directions of the RESNET Board of Directors are listed as follows:

- Authorized Official – Dell Brown – is superintendent of the WISD and has implemented several TIF and other grants. Dell has been one of the leading RESNET and now the ETCC Project “evangelists” for the past four years. It is his vision that has largely sustained this project and who holds the key to fully connecting the community.

- Project Director – Ben Talley – has assisted with the implementation of two TIF grants in PS 6. He is a computer science teacher at Woodville High School and assistant network manager for the Woodville ISD.

- Financial Officer – Tommy Weaver – is business manager for the WISD and has managed all financial aspects of every WISD grant including TIF.

-

C. Managerial Process

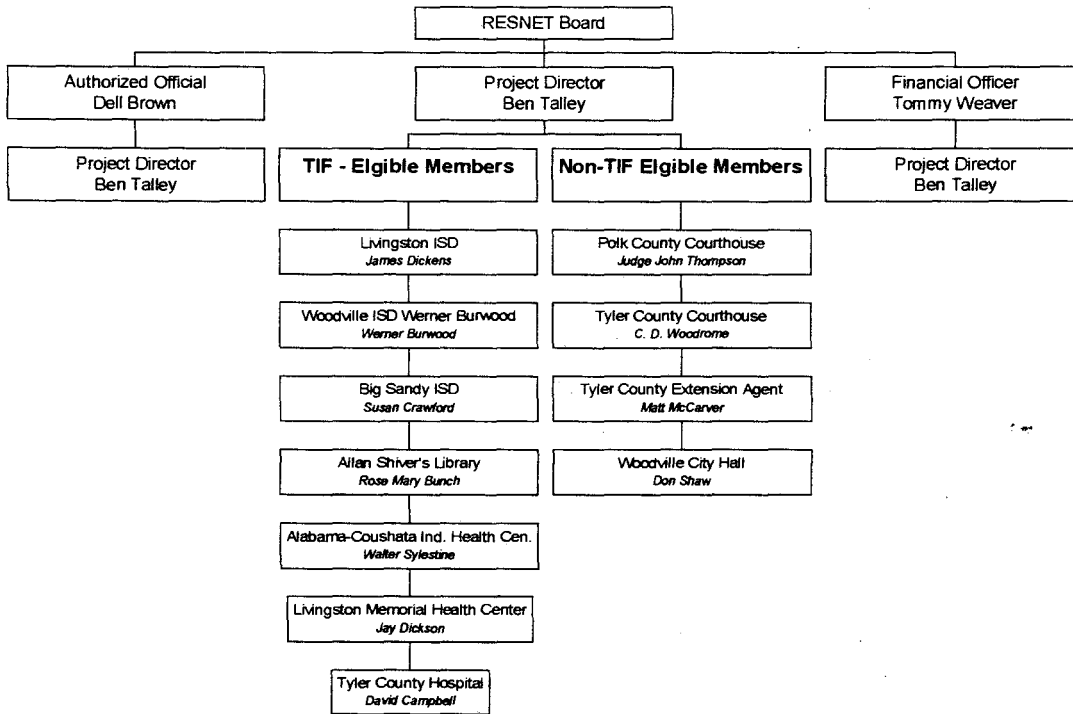
The head of each member shall appoint a person to carry out the day-to-day operations and execute the decisions made by the ETCC governing body.

Grant Officials

Fiscal Agent – WISD – is well adapted to handling large amounts of money involving government agencies and has served as fiscal agent on other TIF grants.

Network Manager – Larry Flournoy – works for Texas A & M University in the Academy for Advanced Telecommunications and Learning Technologies.

East Texas Community Consortium
Community Network Organzational Chart



D. Volunteer Management

Describe plans for recruiting and making effective use of volunteers. Identify individuals responsible for working with volunteers and coordinating their activities. Indicate the roles and responsibilities – i.e. clerical, technical, or help desk – volunteers will have in contributing to the project. Include expected number of hours volunteers will contribute to the project. Reviewers will analyze proposals for the level of detail provided with respect to best utilizing volunteers.

Since the TIF Grant money cannot be used to support personnel services, it becomes imperative that volunteers carry out many of the functions of the Community Network. Many people want to help but are never quite sure how. To this end, we have set up our public library, the Allen Shiver's Library, as the contact point for our needed volunteers. Ms. Rosemary Bunch, the Allen Shiver's Library Director, will be responsible for coordinating these efforts. The library system is a natural place to encourage volunteer work. For decades, volunteers have been used in libraries all over this country to facilitate information services to users. In a similar fashion, and since the library will be a central focus point of our project, we feel that the library is a natural arena to advertise, recruit, train, and staff for our network. Ms. Bunch has been particularly effective in helping manage the Allen Shiver's Library Volunteers and the feeling is that she will do a tremendous job in helping provide the manpower to meet our network's emerging needs.

It is envisioned that volunteers will be needed for clerical support, a help desk, as information providers, oversee and manage our portable public access terminals (Kiosks), help attract new volunteers to our network, occasionally speak to local groups like the Lions Club, Rotary Club, and school PTA's about the need for more volunteers, aid in technical support for the network, help train other volunteers, provide representatives to serve on ETCC quality committees and help collect data from our community.

One of the most successful methods for collecting data from the community is by the use of volunteers. When volunteers from the community collect the data, there is a better response rate. It also helps to create the buy-in of the community needed to make our project successful. Some of the kinds of data that will need to be collected (in anticipation of the awarding of this grant) will be to evaluate the knowledge base of the community about the World Wide Web. If

the community is unfamiliar with the concepts of the Internet or World Wide Web, then our project would need to be modified to provide information on the benefits of these concepts. It is critical that our community understands so that they can fully participate in the development of the ETCC Network. Research has shown that community expectations of what a community information network is and what the network can provide the community is crucial for a project of this magnitude. This information will help drive the content and format of our community's presence on the World Wide Web.

Importance will also be placed on defining each role that a volunteer will play in the network. The ETCC will reward volunteers at the end of the year for efforts and hours deployed. There will be an award's banquet featuring a celebratory meal. All volunteers will receive a nice certificate denoting the number of hours expended toward the community network. A "volunteer of the Year" will be selected based on performance or acts of service "over and beyond the expectations of the task." It is anticipated that each volunteer will be asked to "give" a minimum of five hours a week to the project. However, we also realize that some volunteers will want to give much more than that and some will want to give less. Every effort will be made to accommodate our volunteer's time needs. Arrangements will also be worked out to accommodate our community network tasks.

Our key goal in managing our volunteers and then our network is to "match" the tasks that need to be undertaken with the people and skills needed to complete the tasks. We also plan to have quarterly volunteer recruitment drives. These recruitment drives will be advertised on the ETCC Intranet, posted in business store windows, advertised on the radio, and run in both community newspapers. Additionally, each of the school districts will have the advantage of sending information home to parents via PTA newsletters, report card inserts, and flyers. Once there is an ample number of volunteers on hand, there will be training sessions. It is expected that volunteers will have a significant say in where they would like to be placed (manning a help desk, working with computer labs in the schools after hours, managing the portable Kiosks, etc.). We would sincerely like them to be cross-trained since a volunteer might not be able to be at a place on a particular day. We would also want to maintain a database of volunteers who could occasionally help out. Ms. Bunch would manage this database of volunteers. Each volunteer will also be given an ETCC T-shirt both as a show of appreciation and a method of identification during the duration of their service. Each volunteer will also be

given an I.D. Card that will be attached to their shirt or blouse to identify them and their organization. The Woodville ISD will create these badges.

We also plan to have semi-monthly volunteer orientation sessions. These sessions will function like an "open-house" and allow perspective volunteers to see what they might be potentially getting into without making a firm commitment. The volunteer "open-houses" could start off at the library but later could be rotated around both communities for convenient meeting access. At the open-house sessions, perspective volunteers will be asked to complete a questionnaire that will ask them to list their particular skills and times that they might be available to serve. The listed skills might be computer skills, Internet skills, leadership skills, marketing skills, speaking skills, organizational skills, and sales skills. The availability times would be mornings, afternoons, evenings, and weekends. At each of the volunteer "open-houses," refreshments will be served and students from the local school districts will be asked to keep small children that are there. This kind of service will allow parents with small children the ability to attend the meetings and not have to worry about having to find a sitter.

E. Involving the Community and End Users

Describe strategies designed to bring users to the network. Indicate efforts designed to inform the community about the Community Networking resources and volunteer opportunities. Identify how the Community Network intends to conduct outreach activities and how such activities will be funded. Address how information about the Community Network will be collected and disseminated for publicity and support purposes.

We realize that our community network is going to take time to implement. It is going to also take a considerable amount of effort on everyone's part. Although a good community network must have the requisite amount of cabling, hardware, switches, servers, and computers to effectively meet the user's needs, it is still the people that will ultimately make the difference. In the broadest sense, a community network is the application of information technologies to improve the lives of the residents of that community. However, in order to help residents we must first educate them on how a community network can impact their lives. The following strategies are proposed for the initial stage of our ETCC Network. Each of these strategies is designed to bring users to the network.

First, we will educate our local towns and county officials about our community network and how it may be used to raise the quality of their lives and at the same time lower the cost of delivering those services (time and distance savings including travel costs). Next, we will

educate local community groups on why it will be advantageous for them to advertise their events on our network. It goes without saying but when you effectively advertise events the attendance at those events goes way up. Individual meetings will be set up with the area Lion's Clubs, Rotary Clubs, ESCAPEES Club (a retired person's travel club which has its national headquarters in Livingston, Texas), the local AARP, DETCOG, Boys and Girls Club, etc. Representatives from the ETCC will meet with these groups to hopefully announce our grant and to explain how the network will operate. Volunteers (a rich source of help for the network) will also be solicited at these meetings. Certain community groups will have a natural tie to our network. For instance, businesses, health care organizations, libraries, chambers of commerce, area public and private schools, senior citizen groups, and Angelina College will see the need to belong to our network. Through our network, they will be able to disseminate a wide variety of useful information to their members and constituents.

Next, we will attempt to educate our residents about the value of being able to access our network from their homes. If they don't have access to a computer, and many of our residents because of their economical status don't, then we would make them aware of each of the locations of for accessing our network (public library, high schools during evening hours, selected nursing homes, selected hospital waiting rooms, other portable "Kiosk" locations. Business people will also be made aware of the tremendous potential for reaching and expanding their customer base.

Community outreach activities will be provided in the following manner. We propose to use civic clubs, community organizations (explained at the various meetings that we will have across the community), and ETCC entity members to man information booths at popular shopping places or any place where the community will gather in sufficiently large numbers. The booths will be staffed by trained volunteers and knowledgeable ETCC member partners. The booths will contain information regarding the network, user opportunities, portable network locations, volunteer opportunities, and sign-up sheets. Information, requesting a user or organization's needs will also be collected. The booths will also contain a portable networked computer station (Kiosk) similar to the ones that will be found across each county. There, residents will be able to experience firsthand how the network will work and how to access certain information. Naturally, some of these demonstrations will be set up after the Community Web Site is established (at least the skeleton of the community Web Site).

The opportunities to reach our community residents are seemingly endless in Polk and Tyler Counties. Livingston has a "Pine Cone Festival" each September that is well attended and culminates with a craft fair and entertainment and food booths. Woodville enjoys a "Dog Wood Festival" each April. In the past year, Livingston has begun hosting a regional "Trade days" where vendors from around Texas ply their wares. In between, there are rodeos, antique shows, school events, booster club activities, and PTA "Fall Feasts" and "Spring Flings." Local businesses, such as Wal Mart, will be enlisted to provide booth sites in heavy traffic areas to attract the most people. These booths will allow us to enlist other volunteers as well as educate our community on what's available from the community network. Funds to support these activities (supplies, business cards, flyers, radio announcements, newspaper ads, etc.) will come from in-kind contributions from each of the ETCC and RESNET partners. Requests will also be made to local clubs to budget money for sustaining these activities.

Another rich source of community outreach is the public schools and libraries. These two groups can enlist the aid of students to conduct outreach activities. The health occupation classes (already established at Woodville and Livingston High Schools) could assist in diabetes and other illnesses screenings. They could also assist in educational classes related to these illnesses. Each school also incorporates Business Communications Information Systems (BCIS) classes. These classes will help man information booths, assist in community demonstrations, and participate in the training's that will be held at regular evening intervals at the high schools.

5. Description of the Community: Describe the community to be served by the project. Include demographic data. Descriptions should include geographical, economic, community skills and abilities, and cultural information. Applicants should demonstrate that the community to be served by the project reflects a genuine community having both geographic and cultural commonalties. Communities of interest alone do not qualify for this program, but can be important components of a successful project.

The East Texas Community Consortium, and the resultant East Texas Community Networking Project, consists of Polk and Tyler counties in East Texas. These two counties include the communities of Big Sandy, Livingston, the Alabama Coushatta Indian Reservation,

and Woodville. These are distinct communities linked by State Highway 190, which crosses both counties in an East to West direction. The bulk of the population of both counties lives within a few miles of the Highway 190 corridor, which links Woodville to Huntsville, Texas.

By itself, Polk County encompasses 1070 square miles. Polk County is located in the pine forests of East Texas about 70 miles due north of Houston. It is bounded on the southwest by the Trinity River and on the northeast by the Neches River. The county has a deep and rich sense of history. Records show that the Alabama and Coushatta Indians established camps on the Trinity and Neches Rivers about 1780. In 1846, the county was formed as a public subdivision and named for President James K. Polk. Later, Sam Houston granted permanent asylum to the Alabama and Coushatta Indians as a reward for their display of courage in remaining neutral during the Texas War for Independence from Mexico. The reservation lies in the midst of the Big Thicket National Forest near Lake Livingston. It is Texas' oldest Indian Reservation. The Alabama Coushatta Indian Reservation contains some 4,600 acres of verdant timberland and is considered to be the oldest reservation in the United States. The coming of the railroads later transformed Polk County from a farming community to a timber community. Logs cut and milled from this part of the state went to helping build a young and growing United States. Timber has remained the area's chief industry.

The Deep East Texas Development Association lists Polk County with over 50,300 residents. According to the DETDA (April, 2000 report), Polk County is now the second fastest growing county in Texas. A U.S. Census Bureau Population Snapshot shows that the county has grown 63.9% since 1990. Livingston serves as the economic hub and County Seat for a population of 25,000 people living in a twenty-mile radius. Financially, sales tax receipts have increased consistently and, since there is no city property tax, provide sufficient revenue to support all of Livingston's municipal services. Bank deposits in the area are approximately \$350,000,000, which equates to \$1,400 per person. Livingston is also the regional headquarters for the Sam Houston Electric Cooperative and home to over five hundred (500) small businesses.

Polk County has a large retirement community. Persons age 65 and over make up approximately 16.2% of our population. This is over 29% above the national average. Livingston is also the national headquarters for Escapees, Inc. This is a 30,000-member organization of recreational vehicle owners who list Livingston as their primary residence. At any one time, over five hundred (500) Escapees are in residence at their South Livingston

headquarters. The Escapees organization offers numerous services to its members including mail service, health care services and an adult day care center.

Based on 1996 figures, Polk County had a per capita personal income of \$15,825. This ranked a dismal 190 in the state. This personal income is only 71% of the STATE AVERAGE of \$22,324. Like Tyler County, Polk County boasts a very diverse labor force. Of the top 4,000 residents over age 16 working in Polk County, 30% work for Champion International Wood Products Company and Louisiana-Pacific Corporation, 21% work in the prison system, 13% work at Wal-Mart, 15 % work in each of two school districts, 5% work in Polk County Government, 4% work at Sam Houston Electric Company (SHECO), 7% work in the grocery business (H.E.B. and Brookshire Brothers), and 3% work on the Indian Reservation.

Tyler County boasts a population of 20,400. This population is nearly up 3,971 since 1990 for a growth rate of 19%. The fastest growing population is of Hispanic origin. This population group has grown in the last ten years by 766 for a ten-year growth rate of 81%. The average family income in Tyler County is approximately \$14,099. As of 1990, 54% of Tyler County residents had a household income of \$30,000 or less. 25% of residents had a household income of \$10,000 or less and 10% of residents had a household income of \$5000 or less. 1990 figures showed that 18% of residents were living below the poverty line. Not only is Tyler County considered rural, over 84% of our residents are considered rural, but 787 families (1990 figures) do not even have a telephone.

Tyler County has a well-defined labor force. Our residents possess a myriad of skills. Our 1990 labor force statistics showed 5,845 residents employable (16 years old or older). Of these 5,845 work eligible residents, 5% were considered general laborers, 7% hauled materials from one location to another, 17% repaired some kind of item, 6% worked in the farming, forestry, or fishing industry, 8% worked in managerial type jobs, 9% worked in specialty areas, 3% worked as technicians, 9% worked in sales, and 12% of residents worked in clerical or secretary type jobs. Each of these vocations or career fields has applications for learning on-line skills. Each of these careers can be enhanced through possessing the latest information and being "connected."

Woodville, located in Tyler County, is a small rural community with an extremely high poverty rate of 19.7 % and an unemployment rate of 9.75%. Widely diversified, the cultural makeup of the community includes whites, African Americans, Native Americans, and Hispanics. The student population of Woodville ISD is represented by 62.3% white, 32.3%

African American, 3.8 % Native American (who choose to transfer into our district from the Alabama-Coushatta Indian Reservation), 1.5% Hispanic, and .1% Asian. The population of the area served by Woodville ISD is 7,500 which, like Polk County, includes a large segment of retirees. This large retiree population has necessitated the building of four convalescent centers in Woodville as well as a large distribution of home health nurses and the Tyler County Nutrition for Aging Center. Of particular note, 1990 Census figures showed that 18.3% of persons 65 years or older were living beneath the poverty level.

Since the town's location is over an hour away in any direction from a larger city, the schools and public library provide the majority of experiences and contact that the students have with the outside world. Many of our students are isolated due to their rural location and financial status and have never been outside of the county. This is despite the fact that Beaumont is only 70 miles away and Houston is roughly 90 miles away. The WISD's e-rate discount for economically disadvantaged youth over the passed two years has run 77.7% meaning we have a large share of our population at or below the poverty level:

Each of the communities shares certain commonalties. Among the commonalties are geographical location and economy. Both communities are considered rural and economically disadvantaged. Both Counties' economies are diverse. Timber related industries, tourism, oil, and the Texas Department of Criminal Justice (the Terrell Maximum Security Prison Unit located in Livingston) are the mainstays of the local economies. Each enjoys a heavy dependence on the timber industry for jobs and economic growth. For instance, some forestry experts consider Polk County the number one timber-producing county in Texas. Both counties enjoy a large population of senior citizens, owing to the counties' geographical locations near two major Texas lakes. Lake Livingston (98,000 surface acres), located adjacent to Polk County, is a major contributor to the growth of the county. Constructed to furnish water to nearby Houston, the lake is a major attraction for both retirees and recreational visitors. Tyler County lies closer to Lake Rayburn, which is the largest lake wholly within the state's borders.

Our Communities are defined in many ways. Age, occupation, geographical location, cultural information, health status, and common skills and abilities define them. Each of these variables defines a "Community of Interest." But Communities of Interest intersect in many ways because people are many things at the same time and have overlapping fields of interest. What we are hoping to do in our project is to establish a "sense of community." To us, a "sense of

community” refers to a feeling that members have of belonging, a feeling that members matter to one another and to the group, and a belief that members' needs will be met through their commitment to be together.

Many long-time residents like to reminisce about the old days when people “were closer” and “everyone knew everyone else.” In today’s mobile and complex society, can this feeling of “togetherness” ever be accomplished again? We say yes! We believe that our ETCC Networking Project has the ability to redefine this “sense of community.” We believe that by “connecting people” and giving them opportunities to participate in their own lives, we will have actually created a closer and more knowledgeable community. We have targeted a number of key Communities of Interest to tie together in the ETCC / TIF Community Network Grant: health care, education, commerce / e-commerce, local government, workforce development, and many others.

Our communities are fortunate in that there already exists a local telecommunications initiative called RESNET, which provides a logical and physical connection to the outside world. RESNET is infrastructure only and it is relatively new. Currently, there are no applications driving the use of the backbone. This TIF Community Networking Grant provides the ideal vehicle to utilize the RESNET backbone as a core for building a Community centered, information intensive, user oriented, services providing, Web based network.

This fiber backbone travels down the same Highway 190. RESNET is a consortium consisting Polk County and City of Livingston government, a local commercial telecommunications company – Livingston Telephone, Sam Houston Electrical Co-Operate (SHECO), Livingston ISD, Big Sandy ISD, Woodville ISD, Polk County Library, Memorial County Hospital, and the Alabama-Coushatta Indian Nation. This consortium is dedicated to providing advanced telecommunications infrastructure to the East Texas Piney Woods.

To this end, we have 6 strands of single mode fiber beginning in Livingston and going to Woodville. In Livingston, the schools, the library, the county Hospital, most of the County offices, and some of the City offices already have multi-mode fiber in place. Some of these entities are already connected to the backbone. The Alabama-Coushatta tribal clinic, Community Center, and tribal offices have fiber and are connected to the backbone. In Woodville and Big Sandy, only the schools are currently connected. SHECO has a fiber drop and maintains the fiber as part of their arrangement with RESNET but are not currently connected.

6. Needs and Assets Analysis

A. Community/Economic

Clearly define a problem or set of problems or needs faced by the community that can be addressed through the application of information infrastructure. Also describe community economic, cultural, and social resources and assets that might contribute to the success of the project.

The following are problems / concerns faced by our communities. Each of these identified problems can be addressed through the implementation and application of the East Texas Community Consortium Networking Project.

Tyler County has a 19.7% poverty rate and a 9.75 % unemployment rate. Each of these figures are considerably higher than the state average. The Woodville ISD receives a 77.7% E-rate discount for possessing a high economically disadvantaged student population. The Livingston ISD has a slightly lower economically disadvantaged student population (approximately 50%). Each community has an aging population of senior citizens that is larger than the state average. According to the Department of Agricultural Economics of Texas A&M University (1997), Tyler County has nearly twice the population of citizens over the age of 65 than does the rest of the state (19% to 10%).

Currently the Woodville ISD is the only location where a high speed Internet connection is available. Although our area has a significant infrastructure in place (RESNET), it lacks the resources to get fully connected and / or to fully utilize RESNET's capabilities. There are no applications driving information or information technologies. Our infrastructure is merely a shell with unlimited and unrealized potential. Each of our counties is under-served by new and modern technologies. Both counties are rural and are some distance (60-100 miles) from the next largest city (Beaumont, Houston).

Technologically speaking, most of our residents do not own personal computers. Moreover, they do not know how to operate one. Still, others have never ventured "on-line." These issues speak to the heart of training and acquainting your community with the endless possibilities of personal computers and the Internet. There are other community needs, which have been identified after many discussions with ETCC partners.

Health Care

Both local hospitals need high-speed connections involving real time video in order to connect to the Houston Medical Center. This would help our rural health care specialists seek assistance in the diagnosis and treatment of major illnesses such as cancer, diabetes, and heart disease. Our Local hospitals also need the high-speed connection in order to transmit x-rays and specialized patient data. Currently x-rays and other patient records must be sent by over-night courier. This causes precious time to be lost and puts our patients at-risk. Both Counties would also like to investigate the use of "Waveland" technologies to enhance the ability of ambulances and EMTs to respond in emergencies. This "Waveland" technology would allow specialized caregivers to send and receive vital data and documents over satellite type transmissions. The ambulances could then be indelibly linked with area medical centers no matter where the ambulances were positioned.

The Alabama Coushatta Indian Nation struggles with a high incidence of Juvenile Diabetes. They are currently involved in several studies attempting to identify the variables associated with this high rate. Up-to-date information, regarding this illness, is hard to come by and leaves our residents largely in the dark. We believe that all people should participate in their health – both on the prevention side and the intervention side.

Our ETCC Network could be used as an informational tool to help combat this high incidence of diabetes. Our network would allow statistics to be posted, give up-to-date information on the Alabama Coushatta on-going studies, offer important diabetes Web Site links, allow our residents to take a "self-help" survey to attempt to early identify symptoms associated with this deadly disease, allow other agencies such as MHMR to coordinate with the Health Center professionals, and offer a comprehensive prevention program of diabetes education.

Currently, the Alabama Coushatta Health Service Clinic conducts monthly diabetes and nutrition specialty clinics with assistance from the University of Texas Medical Branch at Galveston. Daily, blood sugar checks are conducted for those who seek assistance. A newsletter has been created to highlight specialized care and up-to-date articles. It is envisioned that this newsletter could be published and linked on-line for the benefit for all community (and outside the community) members

Information / Library

The Tyler County public library, the Allen Shivers Library, needs additional access points in its operation. Our entire community needs to have widespread access to the Internet. It is envisioned that our ETCC Networking project will provide numerous kiosks (portable Internet Community Access Points), in places like the public library, courthouses, the Nutrition for Aging Center, and hospitals. This type of public access will ensure that our citizens will enjoy a high-speed connection to the ETCC Community Network and the World Wide Web. This will be especially beneficial to those who have no dial-up connection at home.

The Big Sandy ISD (located in Polk County), another ETCC Partner, is a rural and remote one-campus district with 426 K-12 students. 34.6% of the students are labeled "at-risk" and 46% are on free / reduced lunch program. The student population also consists of 21% Alabama-Coushatta Indians. There are few businesses in the town. The nearest gas station, located over ten miles away, is not located within the school district's boundaries. With this isolation in mind, the Big Sandy ISD serves as the "hub" for community activities. As would be expected, the community has little or no access to the Internet or to other members of the ETCC save for a school computer lab and a workstation in each classroom.

The Big Sandy ISD and their librarian, Ava Brown, sees as their biggest challenge the need to offer Internet accessibility to community members. The Big Sandy ISD would like to survey community members for the most favorable times when they could come to the school (library and computer lab) to use the Internet. The survey would also ask community members to respond to how much training they have had in the use of the Internet and other on-line technologies. Through the use of additional "Kiosks" or stations, the Big Sandy ISD could offer the community additional on-line sites in which to expand their horizons. Further, the addition of "connected" sites with expanded hours (past the normal school district hours) would allow the community nearly unlimited access and convenience to the Internet. The addition of Internet accessible sites would also allow the Angelina Community College (the Angelina Community College already offer continuing education classes in Livingston nearly thirty miles away and are always looking for new satellite programs in rural towns) to offer Continuing Education Classes at night teaching Internet skills, workshops, online seminars, and other course offerings. As an added bonus, the added Internet accessible stations would also allow the school's students to take "virtual field trips" and college courses.

Businesses / Connectivity

Both of our communities have a higher than average unemployment rate. The unemployment rate approaches 9.5%. Polk County is also listed as the second fastest growing "small community" in Texas (REIS Bearfacts for Polk County, April, 2000). Given these two distinct pieces of data, it would seem that our network would be the perfect conduit to allow businesses to grow while at the same time posting job opportunities for our residents. It would be the perfect example of a "need meeting a need." However, in order to meet this employment need, we must first provide our citizens with a place to connect and training on how to use the Internet. Our network could provide other links to job related resources and government assistance programs. All "job find" related resources would be at the click of a mouse. Our network could offer specific training on how to surf the Internet and how to link up with job databases on the local, state, and national levels. It could offer other citizens tips on how to "grow your business over the Internet." E-commerce in this area cannot come about without a structured program or resources to provide residents with a place to connect and training on how to use the Internet and e-commerce. Hence, we believe that without our envisioned ETCC Network e-commerce cannot flourish in Polk and Tyler Counties.

Community Economic, Cultural, & Social Resources & Assets Contributing To Success of the Project

We believe that our proposed ETCC Networking Project is extremely viable because of the following variables and / or community assets already in place. First, the ETCC is economically, socially, and contractually bound to RESNET. RESNET, and their Wide Area Network (WAN), was at one time the longest privately owned fiber in this part of the world. Second, the RESNET Board, with members comprised of almost all of the ETCC members, is in place and operating efficiently with a strong commitment to govern the ETCC. This RESNET Board, hereafter referred to as the ETCC Board, has been in place and holding monthly meetings for at least the past three years. Third, each of the area school districts has installed at least one (and in some cases more) network and have Internet access available for their students and staff.

Next, we are partnering with Texas A&M University. Texas A&M University has graciously allowed Larry Flournoy, who is Director of Academy for Advanced Telecommunications and Learning Technologies, to assist and give direction to our ETCC Networking Project. He will also be helping us to sustain it after funding levels are gone. His expertise in this area will also allow us to draw on the experience of many other experts in the telecommunication field. Larry Flournoy will also be working with the RESNET Board (ETCC Board) to help with any and all technical aspects. His help, alone, will bring Texas A&M's vast resources and endless technicians to assist us with setup and trouble shooting in the initial phases of our project.

Another Texas A&M partner benefit is that by being aligned with Texas A&M, we will also be privy to any new information or applications that come via the Texas GigaPOP. The Texas GigaPOP is composed of members from the higher-education community. These members include the Baylor College of Medicine, Rice University, Stephen F. Austin State University, Texas A&M, the University of Houston, and the University of Texas Health Science Center. These members are involved in leading-edge research that requires collaborative efforts with colleagues at other institutions. This collaborative work is facilitated by a high-speed telecommunications infrastructure. With the help of Texas A&M, connecting to a GigaPOP "pipe" through RESNET will add to the success and sustainability of the ETCC Networking Project by giving direct (shortest route possible) high speed connection to places like the Smithsonian, the Houston Medical Center and in the near future, the US Congress.

B. Telecommunications/ Technology

Clearly describe the community's current technology and telecommunications needs. Identify existing informational and technical resources. Describe how technology is distributed throughout the community. Include information such as levels of public access (number of public access terminals available and hours of availability), number of ISPs serving the area, the amount, if any, of technical assistance provided to the community, etc. Reviewers should be able to clearly see what resources are being leveraged and how the project will establish a level of equity and participation with respect to technology resources throughout the community.

With the exception of the RESNET fiber to the schools and Polk County government, only dialup connections are currently available to the average citizen of Tyler and Polk Counties. This Community is fortunate in that there already exists a local telecommunications initiative called RESNET which provides a logical and physical connection down Highway 190 on a fiber backbone. RESNET is a consortium of Polk and Tyler Counties, the City of Livingston government, Livingston Telephone, Sam Houston Electrical Co-Operate (SHECO), Livingston ISD, Big Sandy ISD, Woodville ISD, the Allen Shivers Library, the Polk County Library, the Memorial County Hospital, and the Alabama-Coushatta Indian Nation (including the Alabama-Coushatta Indian Health Care Center). This consortium is dedicated to providing advanced telecommunications infrastructure to our portion of the East Texas Piney Woods. To this end, we have 6 strands of single-mode fiber beginning in Livingston and traveling to Woodville. In Livingston, the schools, the library, the county Hospital, most of the County offices, and some of the City offices already have multi-mode fiber in place. A number of these partners are already connected to the backbone. The Alabama-Coushatta Tribal Health Care Clinic, Community Center, and tribal offices are fibered and connected to the backbone. In Woodville and Big Sandy, only the schools are currently connected. SHECO has a fiber drop and maintains the fiber as part of their arrangement with RESNET but are not currently connected.

There are no applications driving the use of our backbone. The TIF Community Grant provides the ideal vehicle to utilize the RESNET backbone as a core for building a community centered, Web based network, but as of this moment our community can be described as a series of isolated Local Area Networks (LANs). We have, however, targeted a number of key Communities of Interest to tie together in our TIF / ETCC Community Network Grant: health care; education; commerce / E-commerce; local government; workforce development; and others. However, there exists a need to foster better and more rapid communication between all partners of this project and the citizens of our area. This means that every conceivable piece of information would be available on our ETCC Networking site and could be shared in a two-way fashion. Our envisioned community network would allow each of our partners, and other institutions, to work cooperatively, to share knowledge, skills, and capabilities, and to support a democratic and involved community.

In terms of application, this would mean that all local schools and libraries could post useful information to their constituencies. The libraries, especially the larger community libraries, like the Allen Shivers Library, could post area genealogy information. Genealogy is a

hot topic now and it seems that many citizens are attempting to retrace their roots. Online information provides a quick start in this search process and allows them to do a great deal of research without leaving their community. Libraries could also post links with better known genealogy sites including state birth record's departments.

Our area, as stated earlier in our proposal, severely lacks community Internet access. There are not enough Internet accessible sites available to the general public. This is a glaring community weakness and must be addressed. If there are not enough Internet accessible sites, then it follows that our citizens are lacking the ability to "travel" to new destinations, retrieve important information, and stay current in the happenings of our community and larger world. Our proposal will speak to this need in the forms of increasing our communities' ability to connect to the "Net" and by building a community-based Web Site to foster communication and information sharing. That is precisely what a community network is and what it is capable of.

Other community needs exist. Since we have an older and aging population, our citizens need information on the latest treatment of diseases, how to treat common ailments and how to maintain optimal health. The Big Sandy ISD just had a TEA DEC visit. One of the items in their exit report pointed out the need for special education student parents to receive medical and general services information. This could easily be done online and in the context of a community Web site. Genealogy is a want rather than a need. However, the Polk and Tyler areas are rich in history and thriving with ancient settler stories and folklore. Many older Americans are constantly "searching for their roots." What better way to do this than with online resources.

Since over 80% of our two counties are considered rural, many of our citizens own farms and raise animals. These farmers and landowners need answers about stock. Keeping animals healthy, procuring hay and feed, selling, buying and trading could be done more efficiently with a community electronic bulletin board. Becoming a better consumer is another huge need of our area. Our community members need to become smarter consumers by making price / product comparisons via the Internet before purchasing cars, medicines, electronics, etc. This type of consumer research could save money by reducing the need for making repetitive and long drives into larger cities.

Other consumer activities could be carried out online. With the full utilization of our ETCC network, our Polk and Tyler County residents could secure access to auction sites (to order a variety of goods and services), order groceries online, buy tickets to entertainment

events, read the daily paper (in just about every large city across the nation and globe), bank online and save on long distance phone charges via E-mail. The act of staying in touch, alone, could be very beneficial to relatives with aging parents. Emotional well being could be boosted with access to daily email from loved ones especially for those in hospitals, nursing homes, and shut-in situations.

Another area of need that seems to be on everyone's lips that live in rural areas, is the ability to see emerging weather patterns. Our farmers and foresters rely on accurate weather forecasts to complete outside activities and take care of their businesses. Weather forecasts and the receiving of accurate air quality reports would especially be attractive to our area. Many of our residents have breathing problems and are very susceptible to air pollution problems. For example, our forest service is planning some massive under-brush burns for later this summer. From a health standpoint, this kind of information could be critical to residents planning outside or stressful activities. This kind of information could actually save money in healthcare costs.

Each of our schools, especially our area high schools (Big Sandy, Woodville, and Livingston) need a quick method of accessing career and college information. A quality community network could provide this service in a kind of "one-stop-shopping." Students and their guidance counselors could compare and contrast different college offerings, tuition costs, and actually begin the registration process online. Rather than students missing a day of school to visit a college, they could visit a college or trade school online virtually anywhere in the world. If that particular school has a Web site, they can be accessed. Of particular note, financial aid information is always and area of high interest.

The adult services that our areas require are indeed endless. Few residents subscribe to the local newspapers, yet many are looking for work or better opportunities to better their families. As mentioned earlier in this proposal, our community network could provide employment information, job listings, and search services. The job searches could be categorized by job type, skill area, qualifications, or salary range. Other important information could be available on our network. State benefits are always of paramount interest to people. Older residents and those below the poverty line could tap into a whole host of information like Social Security, Medicaid, WIC, Unemployment, etc. Our residents could find out if they qualify for these benefits without having to leave their homes or town. Not only could they find out answers but they could also access help via Web sites and E-mail links.

Finally, our residents could also benefit from information gleaned from legal resources. Residents could obtain legal help, secure information on basic family law, research existing custody laws, look at sample wills, and find out about divorce processes. Further, our farmers could access information about crops, pests, pesticides, prices, varieties of seeds, and through the Texas A&M partnership, receive the most current information. Those residents fortunate to be able to travel could gather information before leaving the two county areas. Motel room and various attraction tickets could be purchased online thus saving time and money.

In essence, our proposed ETCC Community Networking Project should make our communities more viable. According to Stephen Bajjaly (1999), "communities that make electronic information access a priority will have competitive advantages over those that do not. In this age of information, the ability to find, access, and use information resources makes businesses, more competitive, individuals more marketable, and the community more desirable."

We are fortunate in our communities in that there already exists a local telecommunications initiative which provides a logical and physical connection between the Medical Center in Houston Texas to the Central Administration Building in the Woodville ISD. This telecommunications initiative called RESNET, travels down the Highway 59 corridor and then cuts over to Highway 190 where it travels to Woodville on a fiber backbone. The ATM (155-MB fiber) backbone actually begins at the Texas Medical Center and ends in the Technology Director's Office in the Woodville ISD. Along the way, it travels through Livingston (connects the schools, hospital, county government), to the Alabama Coushatta Indian Reservation, to the Big Sandy ISD, and then on to Tyler County (where it connects with the Tyler County Hospital, Woodville High School, and Woodville ISD).

RESNET is a consortium of Polk County and City of Livingston government, a local commercial telecommunications company – Livingston Telephone, Sam Houston Electrical Cooperative (SHECO), Livingston ISD, Big Sandy ISD, Woodville ISD, Polk County Library, Memorial County Hospital, and the Alabama-Coushatta Indian Nations. This consortium is dedicated to providing advanced telecommunications infrastructure to our portion of East Texas. In Livingston, the schools, the library, the county Hospital, most of the County offices, and some of the City offices already have multi-mode fiber in place and a number are already connected to the backbone. The Alabama-Coushatta tribal clinic, Community Center, and tribal offices are fibered and connected to the backbone. In Woodville and Big Sandy, only the schools are currently connected. The Sam Houston Electric Cooperative (SHECO) has a fiber drop and maintains the fiber as part of their arrangement with RESNET but are not currently connected.

The residents of Tyler County

Describe how technology is distributed throughout the community. Include information such as levels of public access (number of public access terminals available and hours of availability), number of ISPs serving the area, the amount, if any, of technical assistance provided to the community, etc. Reviewers should be able to clearly see what resources are being leveraged and how the project will establish a level of equity and participation with respect to technology resources throughout the community.

local schools & libraries to local citizens

- to do research,
- to help educate,
- & to promote e-commerce
- county, state & federal government to local citizens
- to make low income & senior citizens aware of government program & assistance that is available,
- provide website with agricultural info to farmer,

- law enforcement arraignments over video,
- send electronically local government monthly and yearly reports to Austin & Washington,
- provide websites for ALL local citizens to find out what is going on in the schools, courthouse, agricultural extension agency, welfare office, libraries, MHMR, senior citizen nutrition center, justice center, chamber of commerce, city hall, & clubs such as Lions, Rotary & Professional Business Women's, etc.
- local hospitals to larger hospitals such as Houston Med Center & then that information passed on to the patient thru local doctors to give treatment in general & give other avenues to saving people's lives in emergencies.

Identify existing informal and technical resources

- Except for dialup, the schools provide the only real connectivity to the Internet for citizens of this area
- Polk County Courthouse has shown great initiative and leadership in promoting RESNET to connect with fiber
- Commitments from Tyler County Government and state agencies to get connected has now come about

Description of Technology distributed throughout the community

- Angelina College provides night classes through at Woodville High School and Livingston High School locations
- Some local businesses around Livingston & Woodville have websites housed outside the area
- Livingston Phone Company offers an ISP for Polk County

Community Economic, Cultural, & Social Resources & Assets Contributing To Success

- RESNET WAN comprising the longest privately owned fiber in this part of the world.
- RESNET Board, with members comprised of most of the ETCC members, already setup & operating with a willingness to govern the ETCC
- All the area schools have a network up and running with workstations in most of the classrooms
- Texas A&M University has allowed Larry Flournoy, who is Director of Academy for Advanced Telecommunications and Learning Technologies, to assist and give direction to this project as well as help sustain it and bring to the table many other experts in telecommunication. Also Larry Flournoy works with the RESNET Board to help with the technical aspects and bring TAMU's vast resources & technicians in to assist with setup & trouble shooting.
- With the help of TAMU, connecting to a gigaPOP pipe thru RESNET will most definitely add to the success and sustainability by giving direct, shortest route possible, high speed connection to places like Smithsonian, Houston Medical Center and in the near future the US Congress.

Needs and Assets Analysis

Community Assessment. One of the sources will be the community assessment. In that process the group has identified the capacities and assets of the community. This will have shown where current information exchange takes place, what kind of information is being exchanged, what organizations have that information, and who is interested in gaining access to that information. This is a great start. This can be called the established market. People have already decided this information is important and, no doubt, should continue to be accessible. Guide 7 and Guide 8 discuss community assessment in more detail.

Project Services

Technology Plan

Training Plan

Risk Management Plan

Sustainability Plan

Evaluation Plan

Budget

Appendix

ALL RECORDS FROM 05/12/2000 TO 05/12/2000 DATE-TO-BE-PAID

VENDOR NAME	ACCOUNT #	ACCOUNT NAME	ITEM/REASON	INVOICE #	VP DATE	DATE TBP	PO NO	AMOUNT
A T & T	2000 010-426-009	TELEPHONE	020 758 3366 001	04212000	01 05/10/2000	05/12/2000		21.50
A T & T	2000 010-414-009	TELEPHONE	020 758 3366 001	04212000	02 05/10/2000	05/12/2000		3.73
A T & T	2000 010-405-009	TELEPHONE	020 758 3366 001	04212000	04 05/10/2000	05/12/2000		.47
A T & T	2000 010-419-009	TELEPHONE	020 758 3366 001	04212000	05 05/10/2000	05/12/2000		15.52
A T & T	2000 010-419-009	TELEPHONE	020 758 3366 001	04212000	06 05/10/2000	05/12/2000		2.36
A T & T	2000 010-426-009	TELEPHONE	020 758 3366 001	04212000	07 05/10/2000	05/12/2000		2.73
A T & T	2000 010-414-009	TELEPHONE	020 758 3366 001	04212000	08 05/10/2000	05/12/2000		4.39
A T & T	2000 010-413-009	TELEPHONE	020 758 3366 001	04212000	09 05/10/2000	05/12/2000		7.61
A T & T	2000 010-426-009	TELEPHONE	020 758 3366 001	04212000	10 05/10/2000	05/12/2000		5.56
A T & T	2000 010-426-009	TELEPHONE	020 758 3366 001	04212000	11 05/10/2000	05/12/2000		11.40
A T & T	2000 010-420-009	TELEPHONE	020 758 3366 001	04212000	12 05/10/2000	05/12/2000		1.13
A T & T	2000 010-420-009	TELEPHONE	020 758 3366 001	04212000	13 05/10/2000	05/12/2000		5.62
A T & T	2000 010-426-009	TELEPHONE	020 758 3366 001	04212000	14 05/10/2000	05/12/2000		14.69
A T & T	2000 010-430-009	TELEPHONE - HIGHW	020 758 3366 001	04212000	15 05/10/2000	05/12/2000		6.03
A T & T	2000 010-411-009	TELEPHONE	020 758 3366 001	04212000	16 05/10/2000	05/12/2000		.47
A T & T	2000 010-411-009	TELEPHONE	020 758 3366 001	04212000	17 05/10/2000	05/12/2000		.78
A T & T	2000 010-413-009	TELEPHONE	020 758 3366 001	04212000	20 05/10/2000	05/12/2000		5.19
A-1 GLASS CO.	2000 010-426-028	REPAIRS TO VEHICL	TYLER COUNTY SHERIF	207398	05/10/2000	05/12/2000		99.00
AIRECO HEATING & AIR	2000 010-442-013	REPAIRS AT JUSTIC	TYLER COUNTY JUSTIC	6190	05/10/2000	05/12/2000		253.30
AIRECO HEATING & AIR	2000 010-442-013	REPAIRS AT JUSTIC	TYLER COUNTY JUSTIC	6393	05/10/2000	05/12/2000		89.00
AIRECO HEATING & AIR	2000 010-442-013	REPAIRS AT JUSTIC	TYLER COUNTY JUSTIC	6397	05/10/2000	05/12/2000		177.53
ALLIED ELEVATOR	2000 010-442-012	ELEVATOR REPAIRS	MONTHLY MAINT/MAY 2	7721	05/10/2000	05/12/2000		125.00
ALLISON SUTTON MOTOR CO	2000 010-426-028	REPAIRS TO VEHICL	TYLER COUNTY SHERIF	92054	05/10/2000	05/12/2000		128.45
BOYKIN LUMBER & SUPPLY	2000 010-442-013	REPAIRS AT JUSTIC	TYLER COUNTY SHERIF	06881	05/10/2000	05/12/2000		50.27
BROOKSHIRE BROS.	2000 010-427-036	PRISONER MEALS	188/TYLER COUNTY	902799/92730	05/10/2000	05/12/2000		20.54
CANDY CLEANERS	2000 010-426-041	UNIFORMS	TYLER COUNTY SHERIF	04302000	05/09/2000	05/12/2000		231.05
CANDY CLEANERS	2000 010-427-041	UNIFORMS	TYLER COUNTY SHERIF	04302000A	05/09/2000	05/12/2000		49.95
CANON U.S.A., INC.	2000 010-440-007	SUPPLIES	714 A2	PR681496	05/10/2000	05/12/2000		1.60
CANON U.S.A., INC.	2000 010-442-007	JANITORS SUPPLIES	714 A2	PR681496A	05/10/2000	05/12/2000		38.00
CASEY HARRIS	2000 010-408-055	COURT APPOINTED A	JAMES DARRELL JONES	7821	05/10/2000	05/12/2000		350.00
CASEY HARRIS	2000 010-408-055	COURT APPOINTED A	JAMES DARRELL JONES	7820	05/10/2000	05/12/2000		350.00
CHEVRON U.S.A. INC.	2000 010-426-029	GAS, OIL, GREASE	789878980004	789 878 980	05/10/2000	05/12/2000		189.54
COLLIERS INSURANCE AGEN	2000 010-420-014	BONDS	TYLERCOU001	68998951	05/10/2000	05/12/2000		220.50
COLLIERS INSURANCE AGEN	2000 010-420-014	BONDS	TYLERCOU001	38998476	05/10/2000	05/12/2000		82.25
COLLIERS INSURANCE AGEN	2000 010-420-014	BONDS	CRUSEWAY001	3687	05/10/2000	05/12/2000		71.00
COLOR GRAPHICS CO.	2000 010-440-007	SUPPLIES	FORM CG 3-1	101787	05/10/2000	05/12/2000		278.85
CONOCO, INC.	2000 010-426-009	TELEPHONE	38 715 010 5	10611	05/10/2000	05/12/2000		39.94
DAVID DAVIS	2000 010-425-043	RADIO & EQUIPMENT	REIMB ON CAMERA & D	6336	05/11/2000	05/12/2000		513.94
DIAMOND SHAMROCK	2000 010-426-029	GAS, OIL, GREASE	77 015 68	04142000	05/10/2000	05/12/2000		21.01
EAST TEXAS RADIOLOGY CO	2000 010-435-035	MEDICAL EXPENSE	417171	TAMMY E RHOD	05/10/2000	05/12/2000		54.00
EMERGENCY VEHICLE EQUIPT	2000 010-428-042	EMERGENCY EQUIPME	TYLER	015182	05/10/2000	05/12/2000		59.85
ENERGY	2000 010-442-038	UTILITIES-JUSTICE	1727262	9102688 01	05/10/2000	05/12/2000		11.75
ENERGY	2000 010-401-029	KIRBY MEMORIAL MU	5246	656203169	05/10/2000	05/12/2000		10.86
ENERGY	2000 010-442-035	UTILITIES-COURTHD	521552	5178507	05/10/2000	05/12/2000		962.36
ENERGY	2000 010-442-038	UTILITIES-JUSTICE	521577	9284335	05/10/2000	05/12/2000		2,626.03
ENERGY	2000 010-442-035	UTILITIES-COURTHD	619032	9216705	05/10/2000	05/12/2000		402.18
ENERGY	2000 010-442-038	UTILITIES-JUSTICE	521353	9139246	05/10/2000	05/12/2000		57.88
ENERGY	2000 010-442-035	UTILITIES-COURTHD	451094	EB0586991	05/10/2000	05/12/2000		536.30
EXCEL REPORTING & ASSOC	2000 010-415-024	COURT REPORTER	04/17 & 04/18/2000	6860	05/10/2000	05/12/2000		230.00
FEDERAL EXPRESS CORP	2000 010-426-007	OFFICE SUPPLIES	1706 0613 2	7 935 16189	05/10/2000	05/12/2000		62.23
GALL'S INC	2000 010-426-008	DEPUTIES SUPPLIES	0003956513	536628790	05/10/2000	05/12/2000		145.19
GARY MATTINGLY	2000 010-419-015	WITNESS EXPENSE	MEAL/HOUSTON TO DPS	6361	05/10/2000	05/12/2000		18.68
GCT FIRE & SAFETY-JASPE	2000 010-442-010	REPAIRS TO COURTH	TYLER COUNTY	9899M	05/09/2000	05/12/2000		183.10
GTE SOUTHWEST	2000 010-413-009	TELEPHONE	415720372912931704	04222000 01	05/10/2000	05/12/2000		39.94
GTE WIRELESS	2000 010-430-009	TELEPHONE - HIGHW	05422118 116185	0400 01	05/10/2000	05/12/2000		6.09

ALL RECORDS FROM 05/12/2000 TO 05/12/2000 DATE-TO-BE-PAID

VENDOR NAME	ACCOUNT #	ACCOUNT NAME	ITEM/REASON	INVOICE #	VP DATE	DATE TBP	PO NO	AMOUNT
GTE WIRELESS	2000 010-426-009	TELEPHONE	05422126 116185	0400C	05/10/2000	05/12/2000		210.78
GTE WIRELESS	2000 010-423-009	TELEPHONE	02214724 916105	0400 001	05/10/2000	05/12/2000		54.45
GTE WIRELESS	2000 010-411-009	TELEPHONE	03254836 116185	0400 002	05/10/2000	05/12/2000		41.76
HART INFORMATION SVC	2000 010-401-050	ELECTION EXPENSE	14538	823433	05/10/2000	05/12/2000		250.20
HENSARLING'S TIRE CENTE	2000 010-426-029	GAS, OIL, GREASE	TYLER COUNTY SHERIF	04282000	05/10/2000	05/12/2000		139.70
HENSARLING'S TIRE CENTE	2000 010-426-030	TIRES, TUBES	TYLER COUNTY SHERIF	04282000 01	05/10/2000	05/12/2000		709.00
HOUSTON CELLULAR TELEPH	2000 010-426-009	TELEPHONE	70043369	TCS0	05/10/2000	05/12/2000		229.39
IMATION	2000 010-440-012	EQUIPMENT REPAIRS	UNPAID INV #2045010	6615	05/10/2000	05/12/2000		300.00
IMATION	2000 010-440-007	SUPPLIES	3617	4734522	05/10/2000	05/12/2000		245.06
J. A. SEXAUER, INC.	2000 010-442-013	REPAIRS AT JUSTIC	065060000	06631L-01	05/10/2000	05/12/2000		64.95
J. A. SEXAUER, INC.	2000 010-442-013	REPAIRS AT JUSTIC	06506000	0528L-04	05/10/2000	05/12/2000		539.59
J. B. BEST	2000 010-425-041	UNIFORMS, ETC.	CONSTABLE PCT 2	25	05/10/2000	05/12/2000		132.93
J. E. GARDNER OIL CO.	2000 010-426-029	GAS, OIL, GREASE	T147	04272000	05/10/2000	05/12/2000		2,662.60
JARROTT'S PHARMACY	2000 010-427-043	PRISONER MEDICAL	TYLER COUNTY JAIL	04302000	05/10/2000	05/12/2000		151.95
JEROME OWENS-CO JUDGE	2000 010-421-012	EDUCATION, GOVERN	DETCOG WORKFORCE DE	05092000	05/09/2000	05/12/2000		41.72
JERRYS SAW SHOP	2000 010-442-013	REPAIRS AT JUSTIC	027043/TYLER CO SHE	1966	05/10/2000	05/12/2000		21.95
K & S BUSINESS MACHINES	2000 010-440-007	SUPPLIES	TYLER COUNTY SHERIF	7085	05/10/2000	05/12/2000		36.99
LASON	2000 010-440-007	SUPPLIES	00360	00029515	05/10/2000	05/12/2000		68.08
LAVERNE LUSK	2000 010-415-044	COMMITMENTS	DEIDRE D. FINLEY	MT #24,244	05/10/2000	05/12/2000		238.00
LAVERNE LUSK	2000 010-415-044	COMMITMENTS	LINDBURGH GIPSON	MT #24,348	05/10/2000	05/12/2000		388.00
LINDSEY WHISENHANT, ATTY	2000 010-408-055	COURT APPOINTED A	KENNETH WAYNE BOATH	8978	05/10/2000	05/12/2000		350.00
LINDSEY WHISENHANT, ATTY	2000 010-408-055	COURT APPOINTED A	KENNETH RAY ZELLER	9134	05/10/2000	05/12/2000		350.00
LUCENT TECHNOLOGIES	2000 010-402-009	TELEPHONE	X772440	92772440	05/10/2000	05/12/2000		122.35
LUCENT TECHNOLOGIES	2000 010-420-009	TELEPHONE	S624161	73624161 01	05/10/2000	05/12/2000		169.30
LUCENT TECHNOLOGIES	2000 010-407-009	TELEPHONE	0100597471	2705282225	05/10/2000	05/12/2000		52.31
MAGNOLIA APPLIANCE	2000 010-442-013	REPAIRS AT JUSTIC	WASHING MACHINE MOT	145113	05/10/2000	05/12/2000		218.45
MODICA BROS.	2000 010-438-013	TRAVEL & FURNISHE	TYLER CO COMMUNITY	131992	05/09/2000	05/12/2000		26.90
MODICA BROS.	2000 010-426-029	GAS, OIL, GREASE	TYLER COUNTY SHERIF	04302000 01	05/10/2000	05/12/2000		157.60
MODICA BROS.	2000 010-426-030	TIRES, TUBES	TYLER COUNTY SHERIF	04302000 02	05/10/2000	05/12/2000		493.87
NARCE	2000 010-402-007	OFFICE SUPPLIES	2000 MEMBERSHIP DUE	DONECE GREGO	05/10/2000	05/12/2000		50.00
NATIONWIDE PAPERS	2000 010-442-007	JANITORS SUPPLIES	1072941	59638 11	05/10/2000	05/12/2000		40.19
NATIONWIDE PAPERS	2000 010-440-007	SUPPLIES	1072941	58990 11	05/10/2000	05/12/2000		48.77
NATIONWIDE PAPERS	2000 010-442-007	JANITORS SUPPLIES	1072941	60653 11	05/10/2000	05/12/2000		550.48
NATIONWIDE PAPERS	2000 010-427-010	JAIL SUPPLIES	1072953	58963 11	05/10/2000	05/12/2000		290.37
NATIONWIDE PAPERS	2000 010-442-007	JANITORS SUPPLIES	1072941	58966 11	05/10/2000	05/12/2000		314.28
NATIONWIDE PAPERS	2000 010-440-007	SUPPLIES	1072941	58968 11	05/10/2000	05/12/2000		365.43
NATIONWIDE PAPERS	2000 010-427-010	JAIL SUPPLIES	1072953	53723 11	05/11/2000	05/12/2000		394.08
NECHES COMMUNICATION, I	2000 010-425-043	RADIO & EQUIPMENT	CONSTABLE PCT 2	208429B	05/10/2000	05/12/2000		60.00
NICK V MUSSO, D.M.D.	2000 010-427-043	PRISONER MEDICAL	EDDIE TELFORD	04192000	05/10/2000	05/12/2000		211.00
PAGING NETWORK OF HOUST	2000 010-426-009	TELEPHONE	011 522262	011 414974	05/10/2000	05/12/2000		184.99
PAPER WORKS PRINTING	2000 010-419-007	OFFICE SUPPLIES	CRIMINAL DISTRICT A	20091/191/17	05/10/2000	05/12/2000		157.00
PARKER'S DO IT CENTER	2000 010-442-010	REPAIRS TO COURTH	133844	9503	05/10/2000	05/12/2000		3.98
PATRICIA BROWN	2000 010-407-007	OFFICE SUPPLIES	APPEALS #16,153, CO	6172	05/10/2000	05/12/2000		62.56
PICKETT HOUSE RESTAURAN	2000 010-426-024	TRAVEL & EDUCATIO	26 MEALS/DOUGWOOD W	04012000	05/10/2000	05/12/2000		155.74
PITNEY BOWES RENTAL	2000 010-440-015	SERVICE CONTRACTS	9137 4360 20 3	479046	05/10/2000	05/12/2000		241.05
QUILL COPORATION	2000 010-422-007	OFFICE SUPPLIES	03378927	8002072	05/10/2000	05/12/2000		37.95
ROGERS OFFICE SUPPLY	2000 010-402-007	OFFICE SUPPLIES	TYLER COUNTY CLERK	04302000 01	05/11/2000	05/12/2000		15.05
ROGERS OFFICE SUPPLY	2000 010-407-007	OFFICE SUPPLIES	TYLER COUNTY DIST C	04302000 02	05/11/2000	05/12/2000		25.50
ROGERS OFFICE SUPPLY	2000 010-430-007	OFFICE SUPPLIES	TYLER COUNTY DPS	04302000 04	05/11/2000	05/12/2000		9.68
ROGERS OFFICE SUPPLY	2000 010-419-007	OFFICE SUPPLIES	TYLER COUNTY CDA	04302000 08	05/11/2000	05/12/2000		23.89
ROGERS OFFICE SUPPLY	2000 010-420-007	OFFICE SUPPLIES	TYLER COUNTY TAX OF	04302000 09	05/11/2000	05/12/2000		32.77
ROGERS OFFICE SUPPLY	2000 010-421-007	OFFICE SUPPLIES	TYLER COUNTY JUDGE	04302000 10	05/11/2000	05/12/2000		1.22
ROGERS OFFICE SUPPLY	2000 010-423-007	OFFICE SUPPLIES	TYLER COUNTY TREASU	04302000 11	05/11/2000	05/12/2000		8.64
ROGERS OFFICE SUPPLY	2000 010-426-007	OFFICE SUPPLIES	TYLER COUNTY SHERIF	04302000 13	05/11/2000	05/12/2000		244.08
ROGERS OFFICE SUPPLY	2000 010-411-007	OFFICE SUPPLIES	TYLER COUNTY J P #1	04302000 03	05/11/2000	05/12/2000		40.15

ALL RECORDS FROM 05/12/2000 TO 05/12/2000 DATE-TO-BE-PAID

VENDOR NAME	ACCOUNT #	ACCOUNT NAME	ITEM/REASON	INVOICE #	VP DATE	DATE TBP	PO NO	AMOUNT
SOUTHWESTERN BELL	2000 010-414-009	TELEPHONE	409 429 7192 470 9	04212000	05/09/2000	05/12/2000		50.76
SOUTHWESTERN FINANCIAL	2000 010-407-007	OFFICE SUPPLIES	TYLER CO DISTRICT C	795741	05/10/2000	05/12/2000		623.90
SPURGER SERVICE CENTER	2000 010-426-029	GAS, OIL, GREASE	TYLER COUNTY SHERIF	9392	05/10/2000	05/12/2000		23.45
STORY-WRIGHT	2000 010-440-012	EQUIPMENT REPAIRS	103363	156072A	05/10/2000	05/12/2000		30.00
SYSCO FOOD SERVICES	2000 010-427-036	PRISONER MEALS	819219	04262000	05/10/2000	05/12/2000		2,429.62
TAC	2000 010-438-005	WORKERS COMPENSAT	1999 ACTUAL PAYROLL	2290 E	05/10/2000	05/12/2000		16.88
TAC	2000 010-426-005	WORKERS COMPENSAT	1999 ACTUAL PAYROLL	2290 G	05/10/2000	05/12/2000		462.43
TAC	2000 010-401-005	WORKERS COMPENSAT	1999 ACTUAL PAYROLL	2290 I	05/10/2000	05/12/2000		1,280.72
TAC	2000 010-401-045	LIABILITY INSURAN	GENERAL LIABILITY C	04/14/2000-0	05/10/2000	05/12/2000		16,258.00
TAC	2000 010-426-040	LIABILITY INSURAN	LIABILITY COVERAGE-	04/30/2000-0	05/10/2000	05/12/2000		3,954.98
TAC	2000 010-438-013	TRAVEL & FURNISHE	LIABILITY COVERAGE-	04/30/2000-0	05/10/2000	05/12/2000		478.33
TAC	2000 010-401-045	LIABILITY INSURAN	LIABILITY COVERAGE-	04/30/2000-0	05/10/2000	05/12/2000		240.13
TAC	2000 010-426-040	LIABILITY INSURAN	AUTO PHYSICAL DAMAG	04/30/2000-0	05/10/2000	05/12/2000		4,568.00
TAC	2000 010-401-045	LIABILITY INSURAN	AUTO PHYSICAL DAMAG	04/30/2000-0	05/10/2000	05/12/2000		134.00
TEXAS DISTRICT & COUNTY	2000 010-419-012	TRAINING & EDUCAT	TDCAA MEMBERSHIP DU	JOE R. SMITH	05/10/2000	05/12/2000		50.00
THE MUFFLER SHOP	2000 010-438-013	TRAVEL & FURNISHE	TYLER COUNTY COMM S	02292000	05/10/2000	05/12/2000		62.95
THE MUFFLER SHOP	2000 010-426-028	REPAIRS TO VEHICL	TYLER COUNTY SHERIF	04272000	05/10/2000	05/12/2000		38.95
TRIAD OFFICE SUPPLY	2000 010-440-019	OFFICE EQUIPMENT	TYLCOU/DISTRICT ATT	4588	05/11/2000	05/12/2000		2,263.00
TX DEPT OF PK&S & WDLDF	2000 010-363-023	JUSTICE-OF-PEACE	DOCKET #5241	5360	05/10/2000	05/12/2000		66.08
TYCO GENERAL FEED & RAN	2000 010-426-023	ANIMAL CONTROL	TYLER COUNTY SHERIF	92128/92933/	05/10/2000	05/12/2000		15.00
TYLER CO BOOSTER	2000 010-435-022	COURT EXPENSE	CIT PF PUB-GILL/JAC	03072000	05/10/2000	05/12/2000		194.12
TYLER CO BOOSTER	2000 010-426-023	ANIMAL CONTROL	ACCT #1996	04262000	05/10/2000	05/12/2000		9.43
TYLER CO BOOSTER	2000 010-401-050	ELECTION EXPENSE	ACCT #566	04052000	05/10/2000	05/12/2000		138.92
TYLER CO CHILD WELFARE	2000 010-435-040	MISCELLANEOUS	3 JUV ALCOHOL PROG/	0825	05/10/2000	05/12/2000		355.00
TYLER CO HOSPITAL	2000 010-427-043	PRISONER MEDICAL	JAMES SMITH	27285 097007	05/10/2000	05/12/2000		34.50
TYLER CO TRACTOR	2000 010-442-010	REPAIRS TO COURTH	1366	04302000	05/09/2000	05/12/2000		345.36
TYLER CO TRACTOR	2000 010-442-013	REPAIRS AT JUSTIC	1353	76374	05/10/2000	05/12/2000		36.70
VIKING OFFICE PRODUCTS	2000 010-440-007	SUPPLIES	929434	442236	05/10/2000	05/12/2000		169.66
VIKING OFFICE PRODUCTS	2000 010-426-007	OFFICE SUPPLIES	929434	453060	05/10/2000	05/12/2000		50.01
VIKING OFFICE PRODUCTS	2000 010-407-007	OFFICE SUPPLIES	1016138	416387	05/10/2000	05/12/2000		47.70
VIKING OFFICE PRODUCTS	2000 010-420-007	OFFICE SUPPLIES	2262632	417491	05/10/2000	05/12/2000		59.91
WAL-MART STORE #01-0288	2000 010-402-007	OFFICE SUPPLIES	ACCT #64	04272000 01	05/11/2000	05/12/2000		35.90
WAL-MART STORE #01-0288	2000 010-442-010	REPAIRS TO COURTH	ACCT #101	04272000 02	05/11/2000	05/12/2000		235.90
WAL-MART STORE #01-0288	2000 010-421-007	OFFICE SUPPLIES	ACCT #85	04272000 03	05/11/2000	05/12/2000		7.74
WAL-MART STORE #01-0288	2000 010-401-099	CONTINGENCY FOR M	ACCT #074	04272000 06	05/11/2000	05/12/2000		258.42
WAYNE MEREDITH	2000 010-419-015	WITNESS EXPENSE	MEAL & MILEAGE/HOUS	6362	05/10/2000	05/12/2000		90.08
WEST GROUP	2000 010-419-007	OFFICE SUPPLIES	941 250 582	45059848/526	05/10/2000	05/12/2000		119.00
WEST GROUP	2000 010-413-012	TRAINING & EDUCAT	849 242 032	51979A	05/10/2000	05/12/2000		3.78
WEST MAGNOLIA DRIVE-IN	2000 010-436-049	AID TO INDIGENTS	INDIGENT CARE	RAY CUNNINGH	05/10/2000	05/12/2000		18.01
WEST MAGNOLIA DRIVE-IN	2000 010-436-049	AID TO INDIGENTS	INDIGENT CARE	ROSIE MITCHE	05/10/2000	05/12/2000		15.00
WEST MAGNOLIA DRIVE-IN	2000 010-436-049	AID TO INDIGENTS	INDIGENT CARE	RAY CUNNINGH	05/10/2000	05/12/2000		31.00
WHISPERING PINES NURSER	2000 010-442-010	REPAIRS TO COURTH	TYLER COUNTY COURTH	1342	05/10/2000	05/12/2000		98.50
WILDWOOD CIVIC LIBRARY	2000 010-401-032	WILDWOOD LIBRARY	FY 2000 ALLOT/TYLER	6616	05/10/2000	05/12/2000		500.00
WOODVILLE FFA HORTICULT	2000 010-442-010	REPAIRS TO COURTH	TYLER COUNTY	584754	05/10/2000	05/12/2000		642.00
WOODVILLE FORD, INC.	2000 010-426-028	REPAIRS TO VEHICL	00000538	003308	05/10/2000	05/12/2000		20.49
XEROX CORPORATION	2000 010-440-007	SUPPLIES	100281302	172408815	05/10/2000	05/12/2000		114.00
XEROX CORPORATION	2000 010-440-007	SUPPLIES	668113889	172470339	05/10/2000	05/12/2000		278.89
XEROX CORPORATION	2000 010-440-007	SUPPLIES	668113889	172470340	05/10/2000	05/12/2000		265.00
XEROX CORPORATION	2000 010-440-015	SERVICE CONTRACTS	668113889	074882005	05/10/2000	05/12/2000		105.00
ZELESKEY & ASSOCIATES	2000 010-401-093	CONTINGENCY FOR L	GRAHAM VS TYLER CO	126955	05/10/2000	05/12/2000		116.21

58,376.48

ALL RECORDS FROM 05/12/2000 TO 05/12/2000 DATE-TO-BE-PAID

VENDOR NAME	ACCOUNT #	ACCOUNT NAME	ITEM/REASON	INVOICE #	VP DATE	DATE TBP	PO NO	AMOUNT
C. D. WOODROME	2000 021-451-040	MISCELLANEOUS SUP	REIMBURSEMENT/OFFIC	6651	05/10/2000	05/12/2000		29.95
ENTERGY	2000 021-451-035	UTILITIES	451030	S80996399	05/10/2000	05/12/2000		59.17
GCT FIRE & SAFETY-JASPE	2000 021-451-028	MACHINERY MAINTEN	TYLER COUNTY	9899M 1	05/09/2000	05/12/2000		178.70
GLOBE MANN INSURANCE AG	2000 021-451-037	BONDS	OFFICIAL BOND/C D W	69002651	05/09/2000	05/12/2000		220.00
HILLISTER TRACTOR	2000 021-451-028	MACHINERY MAINTEN	00025	R1836/1856	05/09/2000	05/12/2000		72.68
J. E. GARDNER OIL CO.	2000 021-451-029	GAS, OIL, GREASE	T143/R&B 1	04302000	05/09/2000	05/12/2000		1,305.07
JERRYS SAW SHOP	2000 021-451-028	MACHINERY MAINTEN	TYLER CO PCT 1	1857	05/09/2000	05/12/2000		8.50
JO-BE AUTO PARTS	2000 021-451-028	MACHINERY MAINTEN	7050	139773	05/09/2000	05/12/2000		35.29
MODICA BROS.	2000 021-451-028	MACHINERY MAINTEN	TIRES AND REPAIRS,	04302000	05/09/2000	05/12/2000		518.83
TAC	2000 021-448-005	WORKERS COMPENSAT	1999 ACTUAL PAYROLL	2290 A	05/10/2000	05/12/2000		131.68
TAC	2000 021-451-042	LIABILITY INS. ON	LIABILITY COVERAGE-	04/30/2000-0	05/10/2000	05/12/2000		1,518.72
TAC	2000 021-451-042	LIABILITY INS. ON	AUTO PHYSICAL DAMAG	04/30/2000-0	05/10/2000	05/12/2000		1,079.00
TIMBERMANS SUPPLY	2000 021-451-028	MACHINERY MAINTEN	TYLER CO PCT 1	131425/13171	05/09/2000	05/12/2000		15.07
TYLER CO PCT IV	2000 021-448-001	SALARIES	SALARY REIMB/PCT 1	6456 J	05/11/2000	05/12/2000		341.25
TYLER CO PCT IV	2000 021-448-002	SOCIAL SECURITY	SALARY REIMB/PCT 1	6456 K	05/11/2000	05/12/2000		26.11
TYLER CO PCT IV	2000 021-448-003	RETIREMENT	SALARY REIMB/PCT 1	6456 L	05/11/2000	05/12/2000		28.22
TYLER CO PCT IV	2000 021-448-004	HOSPITALIZATION	SALARY REIMB/PCT 1	6456 M	05/11/2000	05/12/2000		65.65
TYLER CO PCT IV	2000 021-448-006	UNEMPLOYMENT INSU	SALARY REIMB/PCT 1	6456 N	05/11/2000	05/12/2000		1.33
TYLER COUNTY GENERAL FU	2000 021-451-042	LIABILITY INS. ON	REIMB INS PREMIUM	MOBILE EQUIP	05/10/2000	05/12/2000		732.90
								6,368.12

ALL RECORDS FROM 05/12/2000 TO 05/12/2000 DATE-TO-BE-PAID

VENDOR NAME	ACCOUNT #	ACCOUNT NAME	ITEM/REASON	INVOICE #	VP DATE	DATE TBP	PO NO	AMOUNT
A & M MOTOR COMPANY	2000 022-451-028	MACHINERY MAINTEN	TYLE 2	20117	05/09/2000	05/12/2000		20.30
A T & T	2000 022-451-035	UTILITIES	020 758 3366 001	04212000 22	05/10/2000	05/12/2000		9.75
ALLISON SUTTON MOTOR CO	2000 022-451-028	MACHINERY MAINTEN	PARTS FOR PCT 2	92115/2253/2	05/09/2000	05/12/2000		58.16
EAST TEXAS ASPHALT CO.	2000 022-451-032	ROAD MATERIAL	32TRC2	30811	05/09/2000	05/12/2000		789.84
EAST TEXAS MACHINERY, I	2000 022-451-028	MACHINERY MAINTEN	TYLER COUNTY PCT 2	31651	05/09/2000	05/12/2000		1,715.29
EASTEX TELEPHONE COOP	2000 022-451-035	UTILITIES	041700248937	936969264501	05/09/2000	05/12/2000		27.13
GCT FIRE & SAFETY-JASPE	2000 022-451-028	MACHINERY MAINTEN	TYLER COUNTY	9899M 2	05/09/2000	05/12/2000		65.44
GULF WELDING	2000 022-451-028	MACHINERY MAINTEN	030133/TYLER CO PCT	503704/5851	05/09/2000	05/12/2000		78.39
HENSARLING'S TIRE CENTE	2000 022-451-030	TIRES, TUBES	TYLER COUNTY PCT 2	04302000	05/09/2000	05/12/2000		1,078.95
HOUSTON CELLULAR TELEPH	2000 022-451-035	UTILITIES	70182738	TYLCO PCT2	05/09/2000	05/12/2000		31.15
INTERSTATE BILLING SERV	2000 022-451-028	MACHINERY MAINTEN	266810	00017255L	05/09/2000	05/12/2000		97.00
J. E. GARDNER OIL CO.	2000 022-451-029	GAS, OIL, GREASE	T144/PCT 2	04302000 2	05/09/2000	05/12/2000		2,104.06
JERRYS SAW SHOP	2000 022-451-028	MACHINERY MAINTEN	TYLER COUNTY PCT 2	1964	05/09/2000	05/12/2000		100.65
JO-BE AUTO PARTS	2000 022-451-028	MACHINERY MAINTEN	7051/TYLER CO PCT 2	04292000	05/09/2000	05/12/2000		78.58
MARTINS TRU-VALUE HDWE.	2000 022-451-028	MACHINERY MAINTEN	SUPPLIES PCT 2	9633	05/09/2000	05/12/2000		19.12
OFFICE MAX CREDIT PLAN	2000 022-451-040	MISCELLANEOUS SUP	6011 5836 0078 7229	000272425376	05/09/2000	05/12/2000		33.33
PAGING NETWORK OF HOUST	2000 022-451-028	MACHINERY MAINTEN	011 528927	011 416978	05/09/2000	05/12/2000		9.03
POWERPLAN	2000 022-451-028	MACHINERY MAINTEN	87001 13258	04242000	05/09/2000	05/12/2000		1,000.00
ROGERS OFFICE SUPPLY	2000 022-451-040	MISCELLANEOUS SUP	TYLER COUNTY COMM P	04302000 05	05/11/2000	05/12/2000		20.31
SHEPHERD'S UNIFORM & LI	2000 022-451-044	UNIFORMS	048168/PCT 2	04252000	05/09/2000	05/12/2000		99.80
TAC	2000 022-448-005	WORKERS COMPENSAT	1999 ACTUAL PAYROLL	2290 B	05/10/2000	05/12/2000		111.62
TAC	2000 022-451-042	LIABILITY INSURAN	LIABILITY COVERAGE-	04/30/2000-0	05/10/2000	05/12/2000		1,572.72
TAC	2000 022-451-042	LIABILITY INSURAN	AUTO PHYSICAL DAMAG	04/30/2000-0	05/10/2000	05/12/2000		978.00
THE MUFFLER SHOP	2000 022-451-028	MACHINERY MAINTEN	REPAIRS FOR PCT 2	04132000	05/09/2000	05/12/2000		95.95
TIMBERMANS SUPPLY	2000 022-451-028	MACHINERY MAINTEN	TYLER COUNTY PCT 2	131632/1848/	05/09/2000	05/12/2000		82.26
TRIAD OFFICE SUPPLY	2000 022-451-040	MISCELLANEOUS SUP	TYLCOU	4424 2	05/09/2000	05/12/2000		99.67
TYLER CO PCT IV	2000 022-448-001	SALARIES	SALARY REIMB/PCT 2	6456 E	05/11/2000	05/12/2000		341.25
TYLER CO PCT IV	2000 022-448-002	SOCIAL SECURITY	SALARY REIMB/PCT 2	6456 F	05/11/2000	05/12/2000		26.11
TYLER CO PCT IV	2000 022-448-003	RETIREMENT	SALARY REIMB/PCT 2	6456 G	05/11/2000	05/12/2000		28.22
TYLER CO PCT IV	2000 022-448-006	UNEMPLOYMENT INSU	SALARY REIMB/PCT 2	6456 I	05/11/2000	05/12/2000		1.33
TYLER COUNTY GENERAL FU	2000 022-451-042	LIABILITY INSURAN	REIMB INS PREMIUM	MOBILE EQUIP	05/10/2000	05/12/2000		748.38
								11,521.79

ALL RECORDS FROM 05/12/2000 TO 05/12/2000 DATE-TO-BE-PAID

VENDOR NAME	ACCOUNT #	ACCOUNT NAME	ITEM/REASON	INVOICE #	VP DATE	DATE TBP	PO NO	AMOUNT
A T & T	2000 023-451-035	UTILITIES	020 758 3366 001	04212000 21	05/10/2000	05/12/2000		5.70
ALLISON SUTTON MOTOR CD	2000 023-451-028	MACHINERY MAINTEN	TYLER COUNTY PCT 3	92234/269/36	05/09/2000	05/12/2000		22.88
BOYKIN LUMBER & SUPPLY	2000 023-451-040	MISCELLANEOUS SUP	TYLER COUNTY PCT 3	06865	05/09/2000	05/12/2000		22.50
DAVIS & BROWN CONST., I	2000 023-451-033	BRIDGE REPAIR	TYLER COUNTY PCT 3	25924	05/09/2000	05/12/2000		5,162.00
EAST TEXAS MACHINE	2000 023-451-028	MACHINERY MAINTEN	TYLER COUNTY PCT 3	31650	05/09/2000	05/12/2000		127.20
EAST TEXAS TRUCK & MILL	2000 023-451-028	MACHINERY MAINTEN	TYLECO3	253338	05/09/2000	05/12/2000		279.95
ENTERGY	2000 023-451-035	UTILITIES	649486	560206121	05/10/2000	05/12/2000		95.03
ETOX, INC.	2000 023-451-028	MACHINERY MAINTEN	TYLER COUNTY PCT 3	J 00025207	05/09/2000	05/12/2000		133.45
GCT FIRE & SAFETY-JASPE	2000 023-451-028	MACHINERY MAINTEN	TYLER COUNTY	9899M 3	05/09/2000	05/12/2000		80.50
GREER ROCK COMPANY INC.	2000 023-451-032	ROAD MATERIAL	TYLER COUNTY PCT 3	04302000	05/09/2000	05/12/2000		1,726.98
GTE SOUTHWEST	2000 023-451-035	UTILITIES	415720378307934906	04222000	05/09/2000	05/12/2000		39.34
HENSARLING'S TIRE CENTE	2000 023-451-030	TIRES, TUBES	TYLER CONTY PCT 3	04302000A	05/09/2000	05/12/2000		315.00
J. E. GARDNER OIL CO.	2000 023-451-029	GAS, OIL, GREASE	T145	04302000 3	05/09/2000	05/12/2000		1,959.82
K & J COUNTRY MARKET	2000 023-451-028	MACHINERY MAINTEN	TYLER COUNTY PCT 3	04172000	05/09/2000	05/12/2000		122.11
K & T TRUCKING	2000 023-451-032	ROAD MATERIAL	TYLER COUNTY PCT 3	746056	05/09/2000	05/12/2000		1,000.00
MARTINS TRU-VALUE HDWE.	2000 023-451-028	MACHINERY MAINTEN	TYLER COUNTY PCT 3	9639	05/09/2000	05/12/2000		2.97
MATTIE SEXTON	2000 023-451-040	MISCELLANEOUS SUP	CLEANING 04/20/2000	TYCO PCT 3	05/09/2000	05/12/2000		35.00
MATTIE SEXTON	2000 023-451-040	MISCELLANEOUS SUP	CLEANING 04/07/2000	TYCO PCT 3A	05/09/2000	05/12/2000		35.00
MUSTANG TRACTOR	2000 023-451-028	MACHINERY MAINTEN	TYLER COUNTY PCT 3	0792920	05/09/2000	05/12/2000		81.80
NECHES COMMUNICATION, I	2000 023-451-028	MACHINERY MAINTEN	TYLER COUNTY PCT 3	208849	05/09/2000	05/12/2000		133.44
OFFICE MAX CREDIT PLAN	2000 023-451-040	MISCELLANEOUS SUP	6011 5836 0078 7229	000272425376	05/09/2000	05/12/2000		33.33
PAGING NETWORK OF HOUST	2000 023-451-035	UTILITIES	011 528928	011 416979	05/09/2000	05/12/2000		9.03
ROGERS OFFICE SUPPLY	2000 023-451-040	MISCELLANEOUS SUP	TYLER COUNTY COMM F	04302000 06	05/11/2000	05/12/2000		20.31
SHEPHERD'S UNIFORM & LI	2000 023-451-044	UNIFORMS	48167	TYLERCO 3	05/09/2000	05/12/2000		102.20
SULLIVANS HARDWARE	2000 023-451-040	MISCELLANEOUS SUP	TYLER COUNTY PCT 3	8806	05/09/2000	05/12/2000		22.21
TAC	2000 023-448-005	WORKERS COMPENSAT	1999 ACTUAL PAYROLL	2290 C	05/10/2000	05/12/2000		155.95
TAC	2000 023-451-042	LIABILITY INSURAN	LIABILITY COVERAGE-	04/30/2000-0	05/10/2000	05/12/2000		1,307.76
TIMBERMANS SUPPLY	2000 023-451-028	MACHINERY MAINTEN	TYLER COUNTY PCT 3	131363/13191	05/09/2000	05/12/2000		81.08
TRIAD OFFICE SUPPLY	2000 023-451-040	MISCELLANEOUS SUP	TYLCOU	4424	05/09/2000	05/12/2000		99.66
TYLER CO PCT IV	2000 023-448-001	SALARIES	SALARY REIMB/PCT 3	6456	05/11/2000	05/12/2000		341.25
TYLER CO PCT IV	2000 023-448-002	SOCIAL SECURITY	SALARY REIMB/PCT 3	6456 A	05/11/2000	05/12/2000		26.11
TYLER CO PCT IV	2000 023-448-003	RETIREMENT	SALARY REIMB/PCT 3	6456 B	05/11/2000	05/12/2000		28.22
TYLER CO PCT IV	2000 023-448-004	HOSPITALIZATION	SALARY REIMB/PCT 3	6456 C	05/11/2000	05/12/2000		65.65
TYLER CO PCT IV	2000 023-448-006	UNEMPLOYMENT INSU	SALARY REIMB/PCT 3	6456 D	05/11/2000	05/12/2000		1.33
TYLER COUNTY GENERAL FU	2000 023-451-042	LIABILITY INSURAN	REIMB INS PREMIUM	MOBILE EQUIP	05/10/2000	05/12/2000		262.64
WELSH ROCK INC	2000 023-451-032	ROAD MATERIAL	TYLER COUNTY PCT 3	10833	05/09/2000	05/12/2000		1,460.90
WELSH ROCK INC	2000 023-451-032	ROAD MATERIAL	TYLER COUNTY PCT 3	10870	05/09/2000	05/12/2000		382.75
								15,781.05

ALL RECORDS FROM 05/12/2000 TO 05/12/2000 DATE-TO-BE-PAID

VENDOR NAME	ACCOUNT #	ACCOUNT NAME	ITEM/REASON	INVOICE #	VP DATE	DATE TBP	PO NO	AMOUNT
A T & T	2000 024-451-035	UTILITIES	020 758 3366 001	04212000 03	05/10/2000	05/12/2000		6.20
CALCO CALLENS CO INC	2000 024-451-028	MACHINERY MAINTEN	TYL4	9456	05/09/2000	05/12/2000		485.09
CALCO CALLENS CO INC	2000 024-451-028	MACHINERY MAINTEN	TYL4	9448	05/09/2000	05/12/2000		533.80
EAST TEXAS TRUCK & MILL	2000 024-451-035	UTILITIES	TYLECO4	252331/25307	05/09/2000	05/12/2000		159.22
ENTERGY	2000 024-451-035	UTILITIES	485012	9239881	05/10/2000	05/12/2000		133.05
FRICTION REPAIRS, INC.	2000 024-451-028	MACHINERY MAINTEN	TYLER COUNTY PCT 4	1238	05/09/2000	05/12/2000		35.00
GCT FIRE & SAFETY-JASPE	2000 024-451-028	MACHINERY MAINTEN	TYLER COUNTY	9899M 4	05/09/2000	05/12/2000		121.93
HILLISTER TRACTOR	2000 024-451-028	MACHINERY MAINTEN	00041/TYLER COUNTY	2082	05/09/2000	05/12/2000		616.02
HOUSTON CELLULAR TELEPH	2000 024-451-035	UTILITIES	70035621	05162000	05/09/2000	05/12/2000		20.77
J. E. GARDNER OIL CO.	2000 024-451-029	GAS, OIL, GREASE	T146	04302000 4	05/09/2000	05/12/2000		1,853.03
JASPER TIRE & DISTRIBUT	2000 024-451-030	TIRES, TUBES	918	44537/44622	05/09/2000	05/12/2000		310.15
MOTT WHOLESALE, INC.	2000 024-451-028	MACHINERY MAINTEN	TYLER COUNTY PCT 4	05012000	05/09/2000	05/12/2000		335.19
OFFICE MAX CREDIT PLAN	2000 024-451-040	MISCELLANEOUS SUP	6011 5836 0078 7229	000272425376	05/09/2000	05/12/2000		33.33
POWERPLAN	2000 024-451-028	MACHINERY MAINTEN	87001 13241	04242000 1	05/09/2000	05/12/2000		163.68
ROGERS OFFICE SUPPLY	2000 024-451-040	MISCELLANEOUS SUP	TYLER COUNTY COMM P	04302000 07	05/11/2000	05/12/2000		20.31
SHEPHERD'S UNIFORM & LI	2000 024-451-044	UNIFORMS	048169	TYLPCT 4	05/09/2000	05/12/2000		114.80
SOUTHWESTERN BELL	2000 024-451-035	UTILITIES	409 429 3919 632 9	04212000A	05/09/2000	05/12/2000		41.13
TAC	2000 024-448-005	WORKERS COMPENSAT	1999 ACTUAL PAYROLL	2290 D	05/10/2000	05/12/2000		141.30
TAC	2000 024-451-042	LIABILITY INSURAN	LIABILITY COVERAGE-	04/30/2000-0	05/10/2000	05/12/2000		1,731.02
TAC	2000 024-451-042	LIABILITY INSURAN	AUTO PHYSICAL DAMAG	04/30/2000-0	05/10/2000	05/12/2000		1,932.00
TIMBERMANS SUPPLY	2000 024-451-028	MACHINERY MAINTEN	TYLER COUNTY PCT 4	131779/576/5	05/09/2000	05/12/2000		126.11
TRIAD OFFICE SUPPLY	2000 024-451-040	MISCELLANEOUS SUP	TYLCOU	4424 1	05/09/2000	05/12/2000		99.67
TYLER CO PCT IV	2000 024-448-004	HOSPITALIZATION	SALARY REIMB/PCT 2	6456 H	05/11/2000	05/12/2000		65.65
TYLER COUNTY GENERAL FU	2000 024-451-042	LIABILITY INSURAN	REIMB INS PREMIUM	MOBILE EQUIP	05/10/2000	05/12/2000		545.08
								9,623.53

ALL RECORDS FROM 05/12/2000 TO 05/12/2000 DATE-TO-BE-PAID

VENDOR NAME	ACCOUNT #	ACCOUNT NAME	ITEM/REASON	INVOICE #	VP DATE	DATE TRP	PO NO	AMOUNT
ANGELINA COUNTY WASTE	2000 037-451-043	CONTAINER HAULS	00631	05012000	05/10/2000	05/12/2000		2,790.50
ENTERGY	2000 037-451-035	UTILITIES	5082	A83867081	05/10/2000	05/12/2000		78.75
GCT FIRE & SAFETY-JASPE	2000 037-451-028	MACHINERY MAINTEN	TYLER COUNTY	9899M 5	05/09/2000	05/12/2000		129.07
J. E. GARDNER OIL CO.	2000 037-451-029	GAS, OIL, GREASE	T148	04302000 5	05/09/2000	05/12/2000		146.92
JO-BE AUTO PARTS	2000 037-451-028	MACHINERY MAINTEN	7053	141533	05/09/2000	05/12/2000		13.20
LAWRENCE UPCHURCH	2000 037-451-040	MISCELLANEOUS SUP	CHLORINE TABLETS	04072000	05/09/2000	05/12/2000		75.76
MODICA BROS.	2000 037-451-028	MACHINERY MAINTEN	TYLER CO COLLECTION	130917	05/09/2000	05/12/2000		18.00
MOTT WHOLESALE, INC.	2000 037-451-028	MACHINERY MAINTEN	TYLER COUNTY COLLEC	87735/87806	05/09/2000	05/12/2000		129.80
TAC	2000 037-448-005	WORKER'S COMPENSA	1999 ACTUAL PAYROLL	2290 F	05/10/2000	05/12/2000		109.22
TAC	2000 037-451-042	LIABILITY INSURAN	LIABILITY COVERAGE-	04/30/2000-0	05/10/2000	05/12/2000		213.34
TAC	2000 037-451-042	LIABILITY INSURAN	AUTO PHYSICAL DAMAG	04/30/2000-0	05/10/2000	05/12/2000		477.00
TIMBERMANS SUPPLY	2000 037-451-028	MACHINERY MAINTEN	TYLER COUNTY COLLEC	131365	05/09/2000	05/12/2000		60.09
TYCO GENERAL FEED & RAN	2000 037-451-040	MISCELLANEOUS SUP	8254/COLLECTION CEN	92838/92862	05/09/2000	05/12/2000		80.45
								4,322.10

ALL RECORDS FROM 05/12/2000 TO 05/12/2000 DATE-TO-BE-PAID

VENDOR NAME	ACCOUNT #	ACCOUNT NAME	ITEM/REASON	INVOICE #	VP DATE	DATE TBP	PO NO	AMOUNT
A T & T	2000 053-451-009	UTILITIES	020 758 3366 001	04212000	18 05/10/2000	05/12/2000		21.16
A T & T	2000 053-451-009	UTILITIES	020 758 3366 001	04212000	19 05/10/2000	05/12/2000		2.34
ACCU CHEM LABORATORIES	2000 053-437-007	CCP SUPPLIES & OP	MITCHELL, JAMES/T99	313410	05/09/2000	05/12/2000		11.00
AMERICAN EXPRESS	2000 053-437-007	CCP SUPPLIES & OP	3783 431528 21003	05252000	05/09/2000	05/12/2000		39.90
AMERICAN EXPRESS	2000 053-451-007	SUPPLIES & OPERAT	3783 431528 21003	05252000A	05/09/2000	05/12/2000		24.95
AMERICAN EXPRESS	2000 053-437-015	TRAVEL/FURNISHED	3783 431528 21003	05252000B	05/09/2000	05/12/2000		402.97
JAMES W. WATTS, F.E.	2000 053-451-016	PROFESSIONAL FEES	1807/ADULT PROBATIO	041000	05/09/2000	05/12/2000		828.97
MINDOLTA CORPORATION	2000 053-437-007	CCP SUPPLIES & OP	18774	A042094885	05/09/2000	05/12/2000		93.59
MUSIC MOUNTAIN WATER CO	2000 053-437-007	CCP SUPPLIES & OP	51092000	24340/485	05/09/2000	05/12/2000		30.00
								1,454.88

